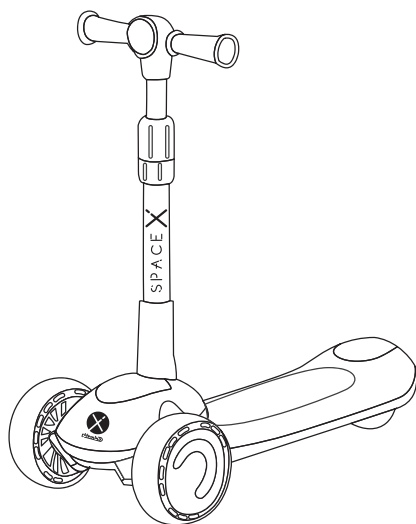
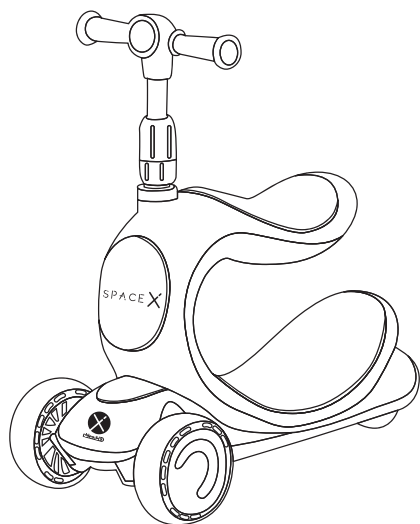


**IMPORTANT! KEEP THE MANUAL FOR FUTURE REFERENCE!**

**INSTRUCTION MANUAL FOR  
KIDS' TOY 2 in 1 – SCOOTER - RIDE ON  
„SPACE X”**



This product **chipolino** is produced in accordance with requirements of Toy safety Directive 2009/48/EC of the European Parliament and the Council, Regulation regarding Essential Requirements and Conformity Assessment of Toys, Regulation regarding Conformity Marking and the standards applicable for this toy.

**FOLLOW ALL WARNINGS, INSTRUCTIONS AND RECOMMENDATIONS  
IN THIS MANUAL IN ORDER TO GUARANTEE THE SAFE USE  
OF THIS PRODUCT:**

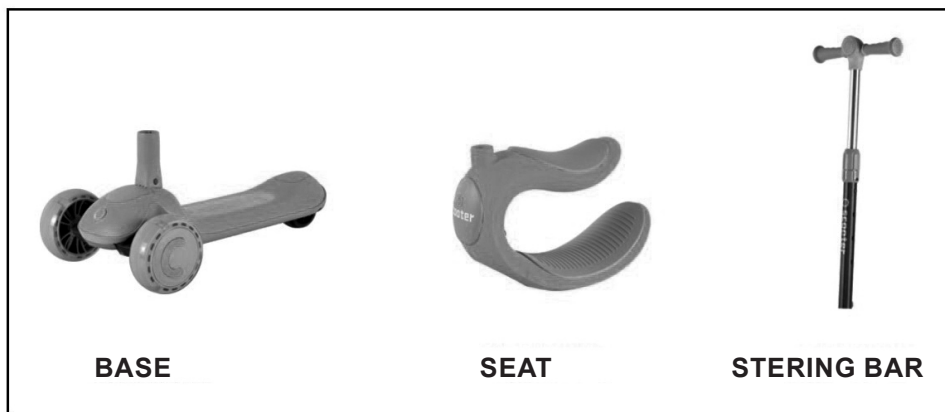
**CAUTION! WARNINGS!**

- ❖ **CAUTION!** USE ONLY UNDER DIRECT ADULT SUPERVISION – FALLING DANGER!
- ❖ **CAUTION!** THIS TOY IS SUITABLE FOR CHILDREN AGED 3 YEARS AND UP AND WITH WEIGHT UP TO 30 KG WHEN USING AS A RIDE ON (WITH SEAT) AND 50 KG WHEN USING AS A SCOOTER!
- ❖ **CAUTION!** DO NOT OVERLOAD THE TOY! IT IS NOT FOR CHILDREN WEIGHING MORE THAN 30 KG WHEN USING AS A RIDE ON (WITH SEAT) AND 50 KG WHEN USING AS A SCOOTER!
- ❖ **CAUTION!** BEFORE USING THE TOY, TEACH THE CHILD THE CORRECT WAY TO USE IT AND THE SAFETY RULES. Some special skills are required for riding this toy and it should be used with high attention to avoid impacts, falling and injuries.
- ❖ **CAUTION!** CHILD MUST WEAR PERSONAL PROTECTIVE EQUIPMENT WHILE RIDING THIS TOY – helmet, elbow and knee protectors, suitable shoes.
- ❖ **CAUTION!** BEFORE USAGE ALWAYS CHECK IF THE STEERING BAR IS SECURELY FIXED TO THE FRAME AND ALL FASTENERS (SCREWS, BOLTS, NUTS) ARE WELL TIGHTEN
- ❖ **CAUTION!** USE THE TOY ONLY DURING THE DAY ON EVEN PLAYGROUNDS AND AT A SAFE DISTANCE FROM STREETS OR ROAD LANES FOR VEHICLES.
- ❖ **CAUTION!** KEEP AWAY FROM FIRE OR OTHER HEAT SOURCES!
- ❖ **CAUTION!** USE THE TOY ONLY FOR ITS PURPOSE.
- ❖ **CAUTION!** THIS TOY IS NOT INTENDED FOR AGGRESSIVE RIDING, TRICKS AND JUMPS.
- ❖ **ONLY** adult assembly of the TOY is required!
- ❖ **DO NOT** allow presence of children under 3 years before assembly of the TOY is complete.  
In this way, you will avoid their access to small or loose parts!
- ❖ The TOY is intended for one child at a time **ONLY!**
- ❖ **DO NOT** use the TOY if you find missing or damaged parts.
- ❖ The brake **MUST NOT** be used while turning left or right, because child can fall and injure.
- ❖ **DO NOT** tie strings or accessories to the TOY in order to avoid the risk of suffocation.
- ❖ **DO NOT** put items or luggage in the steering bar to avoid risk of injury resulting from the TOY's instability and tipping over!
- ❖ **CAUTION!** Child must keep the steering bar with both hands to be able to ride stable and safe.
- ❖ **DO NOT** place items or heavy objects in the TOY or on it during storage or transportation to avoid damage to the frame.
- ❖ **DO NOT** use another transport means to move the TOY by pulling it.
- ❖ **DO NOT** allow the child, who is using the TOY or other children around it to touch the wheels or put items in them.
- ❖ Use away from rivers, pools, stairs or hurdles!
- ❖ **DO NOT** make changes or modifications to the TOY frame! If necessary, contact the retailer or an authorized service center for advice and repair.
- ❖ Use only spare parts, which are approved by the producer and recommended by the distributor or company service! The producer revokes all responsibility in case parts different from the original ones have been used.
- ❖ Keep nylon packages away from children to avoid risk of suffocation!

## PRODUCT FEATURES

- ❖ TOY is suitable for children older than 3 years and with weight:
  - up to 30 kg when using the toy as a ride on (with seat);
  - up to 50 kg when using the toy as a scooter;
- ❖ TOY can be used as a **ride on** or **scooter**  
**SCOOTER:** Child grasps the steering bar with both hands, place one of his/her feet on board and pushes the toy with the other one.  
**RIDE ON:** Child sits on the seat, grasps the steering bar with both hands and push the toy with his/her feet.
- ❖ Height adjustment of the steering bar in 3 positions;
- ❖ Rubber grips at the steering bar with protector to prevent sliding of the hands.
- ❖ Brake on rear wheel.

## MAIN PARTS



*Please, make sure if all these described parts are available in the package.*

## ASSEMBLY INSTRUCTIONS

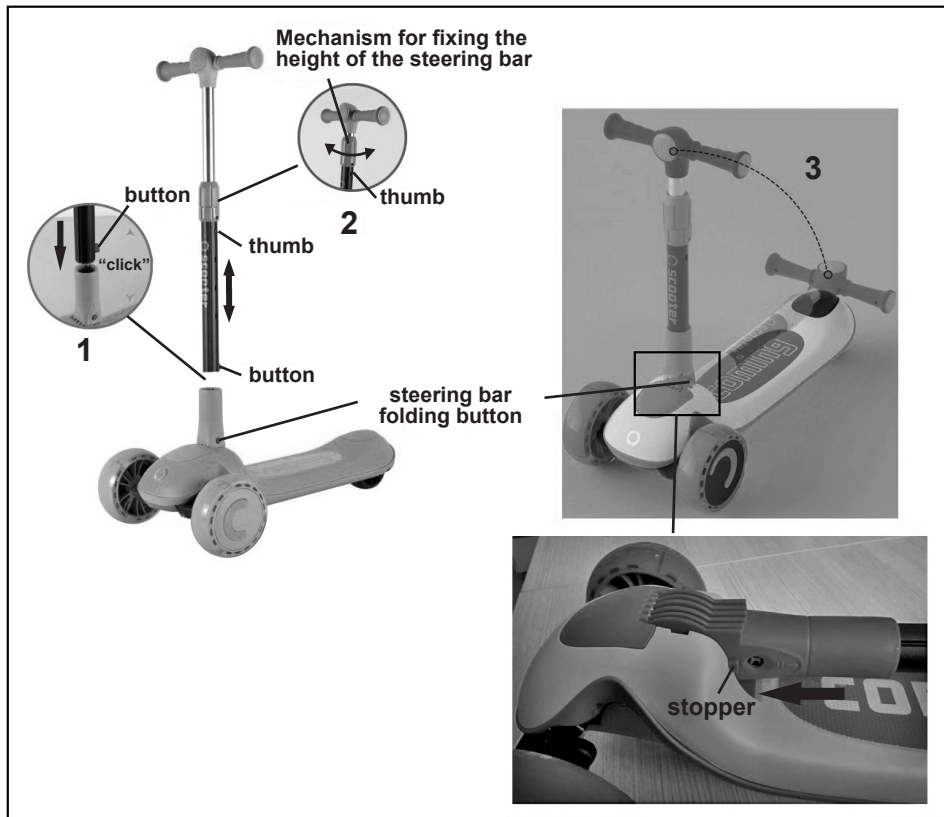
**CAUTION!** FOLLOW EXACTLY THE INSTRUCTIONS GIVEN FOR ASSEMBLY AND USAGE OF THE TOY AND CHECK THE PICTURES.

**CAUTION!** AFTER EACH OPERATION, MAKE SURE THAT YOU HAVE FOLLOWED THE INSTRUCTIONS CORRECTLY AND THE FIXING IS STABLE!

**CAUTION!** TOY MUST BE USED WITH HIGH ATTENTION BECAUSE BALANCE SKILLS ARE REQUIRED. ONLY THIS WAY YOU WILL AVOID FALLING OR IMPACTS CAUSING INJURIES OF THE CHILD.

*For assembly of the toy you do not need any tools.*

## TOY SCOOTER



### 1. ASSEMBLY OF SCOOTER

Place the steering bar into the opening of the base. Press the red button and then the steering bar down until you hear a click sound and the button is displayed through the hole of the base.

### 2. HIGH ADJUSTMENT OF THE STEERING BAR

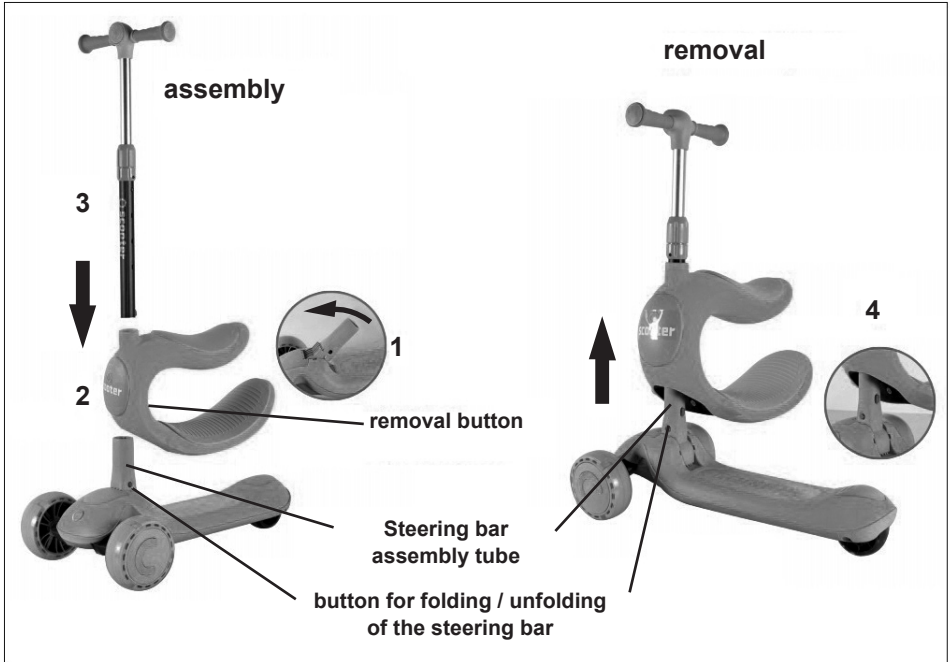
The steering bar can be adjusted in 3 positions.

Unwind the steering bar height fixing mechanism. Press the thumb and move the steering bar up or down according to the selected height. When you select the height, the thumb will appear through the corresponding hole and you will hear a "click" sound. Finally, tighten the steering bar fixing mechanism.

### 3. FOLDING OF STEERING BAR

To fold the steering bar to the base, press the red folding button inward, pull the steering bar upwards, then turn it towards the base.

To fix the steering bar in the folded position, push the steering bar inward until the stoppers on both sides fall into the corresponding grooves.



**1. STEERING BAR ASSEMBLY TUBE**

Rotate the steering bar assembly tube in upright position. When locked, you will hear a “click” sound and the red pin will appear through the hole.

**2. ASSEMBLY OF THE SEAT**

Place the seat on the steering bar tube as shown in the figure.

**3. ASSEMBLY OF THE STEERING BAR**

Insert the steering bar into the seat opening in the position shown in the figure. The red button should point backwards. Press the red button inwards and then the steering bar down until you hear a “click” sound and it locks.

**4. REMOVAL**

Press the removal button. Pull the steering bar up, then the seat. To retract the steering bar tube to the base, press the red button for folding/unfolding inward, pull the tube up, then rotate it toward the base.

## RIDING OF SCOOTER AND USING THE BRAKE



When you push the steering bar right, wheels go also **RIGHT** and scooter turns right.  
When you push the steering bar left, wheels go also **LEFT** and scooter turns left.  
When steering bar is upright, the scooter goes only **STRAIGHT**.

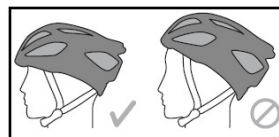
On rear wheel of scooter there is a brake. To activate the brake while riding, child must step with his/her heel and press it until scooter stops.

**CAUTION!** Brake must be used only with one foot.

### Using of helmet, knee and elbow protectors, shoes

For better safety during riding child should wear a helmet, knee and elbow protectors and appropriate shoes!

The helmet must be steady on the head, not tilted back or in position in which it does not protect the forehead.



## CARE AND MAINTENANCE

- ❖ Periodically check the good working order of all parts.
- ❖ Do not wash the TOY and do not soak the TOY in water. Use a soft damp cloth and water or neutral liquid detergent.
- ❖ Do not use aggressive detergents, containing abrasive particles, ammonia, bleach or spirits.
- ❖ Regularly oil the moving parts.
- ❖ Do not use on sand.
- ❖ Do not store the TOY in hot environment or near strong sources of heat, in order to avoid the plastic parts from deforming.
- ❖ Store the TOY in clean and dry place indoors. Do not expose to direct sunlight, rain, high temperature intervals, moisture or harsh weather!
- ❖ Always let the TOY to dry out fully before storing or using it, in order to avoid mold and rust.
- ❖ Contact your authorized dealer if consultation or repair is needed.

**Materials used:** plastic, metal.

**DSSPX02xxxx/808**



---

Bulgaria, Plovdiv, Str. Golyamokonarsko shosse № 1

[www.chipolino.com](http://www.chipolino.com)