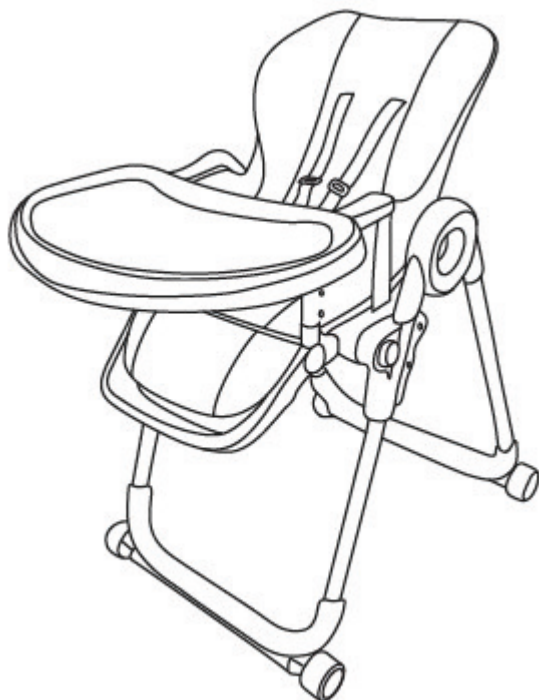


**IMPORTANT! READ CAREFULLY KEEP THIS USER'S MANUAL
IN A SAFE PLACE FOR FUTURE REFERENCE!**

INSTRUCTION MANUAL FOR HIGH CHAIR “MASTER CHEF”

**MASTER
CHEF**



This high chair **chipolino** has been manufactured in accordance with the requirements of Directive 2001/95/EC of the European Parliament and of the Council and complies with EN 14988 Children's high chairs. Safety requirements and regulations of the national legislation, as well as the Consumer Protection Law.

ATTENTION! YOUR CHILD WILL BE MOST SECURE IF YOU FOLLOW THE INSTRUCTIONS AND RECOMMENDATIONS GIVEN IN THIS USER'S MANUAL!

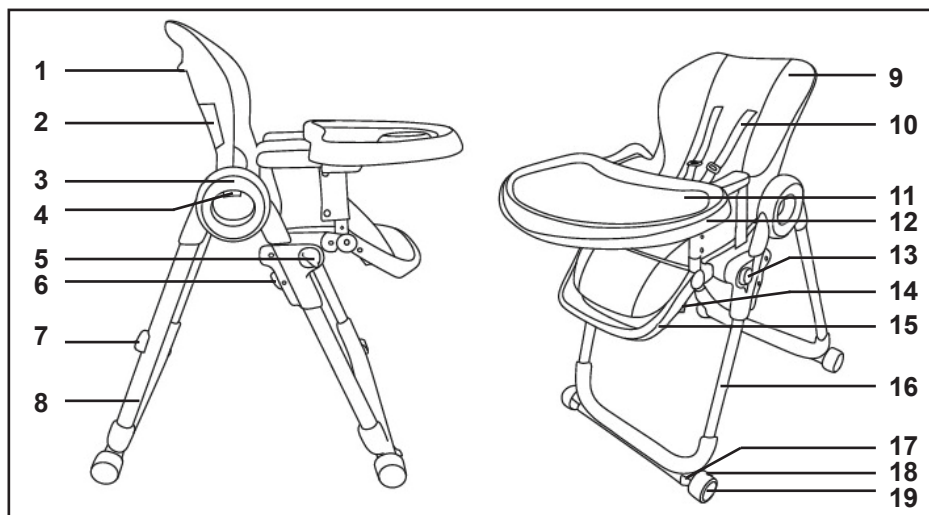
- ❖ **CAUTION! NEVER LEAVE YOUR CHILD UNATTENDED!**
- ❖ **CAUTION! THIS PRODUCT IS SUITABLE FOR CHILDREN, WHO CAN SIT ALONE UNAIDED, AGED UP TO 3 YEARS AND WEIGHING NO MORE THAN 15 KG.**
- ❖ **CAUTION! ALWAYS USE THE SAFETY BELTS, WHEN THE CHILD IS IN THE CHAIR! ALWAYS CHECK IF THEY ARE SECURELY FIXED TO THE HIGH CHAIR'S FRAME!**
- ❖ **CAUTION! DANGER OF FALLING: DO NOT LET THE CHILD CLIMB ON THE PRODUCT!**
- ❖ **CAUTION! DO NOT USE THE HIGH CHAIR BEFORE HAVING MADE SURE THAT ALL PARTS ARE IN GOOD ORDER AND ARE SET IN THE CORRECT POSITION!**
- ❖ **CAUTION! KEEP THIS PRODUCT AWAY FROM FIRE! BE AWARE OF THE RISK OF OPEN FIRE AND OTHER SOURCE OF STRONG HEAT IN THE NEAR VICINITY OF THE HIGH CHAIR!**
- ❖ **CAUTION! OBSERVE THE RISK OF THE PRODUCT TILTING IF THE CHILD REACHES AND PUSHES WITH ITS FEET SOLD BASE SUCH AS A TABLE.**
- ❖ Assembly of the product to be done only by adult!
- ❖ To avoid injury, make sure your child is at safe distance during folding and unfolding of the product!
- ❖ This high chair is not suitable and must not be used by children, who cannot sit unaided and stay in this position by their own!
- ❖ This high chair must not be used for children weighing more than 15 kg!
- ❖ The high chair has a single seat, intended for one child only.
- ❖ Do not lift the chair by the food tray!
- ❖ Discontinue using the product if you find any missing or damaged parts!
- ❖ Do not let your child stand in the high chair!
- ❖ Never lift, move, make any setting or repair to the chair, while there is a child in it!
- ❖ Do not place the chair on elevated and/or uneven surfaces, while there is a child in it!
- ❖ Do not place the chair near stairs, pools or other hazardous areas!
- ❖ Use the high chair only by its purpose.
- ❖ Always apply the parking devices on rear wheels! **USE THE WHEELS ONLY TO MOVE THE CHAIR!**
- ❖ Do not place in storage basket under the seat objects and accessories heavier than 1 kg. .
- ❖ Do not use any spare parts or other components, which are not approved by the producer! The producer does not take any responsibility for the safety of the child when you have not used the proper and original spare parts, approved and provided by him!
- ❖ Do not apply any changes or modifications to the high chair's construction! Contact the dealer or an authorized repair service for advice and/or repair instead!
- ❖ Strings can cause strangulation! Do not place additional strings to the product to avoid injuries!
- ❖ Do not allow children younger than 3 years near the high chair during the assembly or disassembly, in order to prevent the risk of injury or swallowing of small parts!
- ❖ The packaging of the product must be kept out of the reach of children to avoid the risk of strangulation!



MAIN FEATURES

- ❖ High chair is suitable for one child, who can sit alone unaided
- ❖ High chair is suitable for one child aged up to 3 years and weighing not more than 15 kg.
- ❖ 5-point safety harness system
- ❖ Storage basket under the seat
- ❖ Adjustable leg rest – 3 positions
- ❖ Adjustable backrest - 3 positions
- ❖ Adjustable height of the seat – 6 positions
- ❖ Double tray – can be adjusted forth and back
- ❖ Upper part of the tray is detachable
- ❖ Compact for storage after folding

MAIN PARTS



1	Backrest adjustment lever	11	Upper tray
2	Pocket with net	12	Double tray
3	Joint	13	Button for turning the seat 2
4	Folding button	14	Button for leg rest adjustment
5	Button for turning the seat 1	15	Leg rest
6	Button for height adjustment of high chair	16	Front legs
7	Hook	17	Parking device
8	Rear legs	18	Wheels
9	Seat cover	19	Wheels cover
10	5-point safety belt	20	Storage basket

Note: Storage basket (20) is not illustrated in figure.

ASSEMBLY INSTRUCTION AND FUNCTIONS

ATTENTION! Follow exactly the instructions given and the order assembly and usage, described in texts and pictures. In order to complete the assembly, you do not need any tools.

ATTENTION! CHECK THE STABILITY OF FIXING AFTER EACH OPERATION!

1 – OPEN THE CHAIR

Important! Remove the tray from rear legs of high chair.

ATTENTION! Make sure the high chair is fully open and fixed in this position!

2 – ASSEMBLY AND REMOVAL OF FOOD TRAY. ASSEMBLY OF STORAGE BASKET

2-1 Assembly

There are **3 positions** of food tray, marked with **1, 2 and 3** on the armrests. During assemble set the food tray in position **1**. For fixing of each position, release the lever until you hear a click sound.

2-2 - Removal

Assemble the storage basket to down part of the seat with velcro straps.

3 – HEIGHT ADJUSTMENT OF THE SEAT

To set the seat in upper position, grab the frame with one hand and pull upwards the seat with other hand until you reach the required height position.

Note: Fixing is always accompanied with sound “click”.

4 – BACKREST ADJUSTMENT (3 positions)

Note: Fixing is always accompanied with sound “click”.

5 – LEG REST ADJUSTMENT (3 positions)

6 – RESTRAINT SYSTEM

ATTENTION!

- ✓ Safety harnesses must not be worn out or torn and buckles must be strong, without any damages and provide secure connection.
- ✓ The harness must fit well the baby and must not be twisted. They must not change their length after they are locked.
- ✓ Do not place the child in the high chair in belts are not fixed. They are very important for your child's safety!

7 – PARKING DEVICES OF THE WHEELS ON REAR TUBES

8 – FOLDING OF HIGH CHAIR

STEP 1 – REMOVE THE FOOD TRAY

STEP 2 – FOLD THE SEAT (FOLLOW THE MARKINGS GIVEN ON BUTTONS 1 AND 2 FOR FOLDING THE SEAT)

STEP 3 – FOLD THE LEGS OF HIGH CHAIR

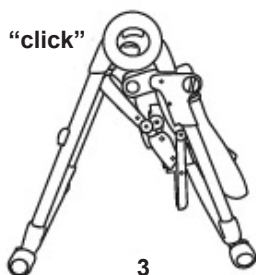
STEP 4 – PLACE THE FOOD TRAY ON THE HOOKS LOCATED ON REAR LEGS

1

1
press



"click"

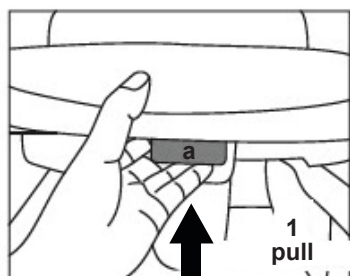


4



5

"click"

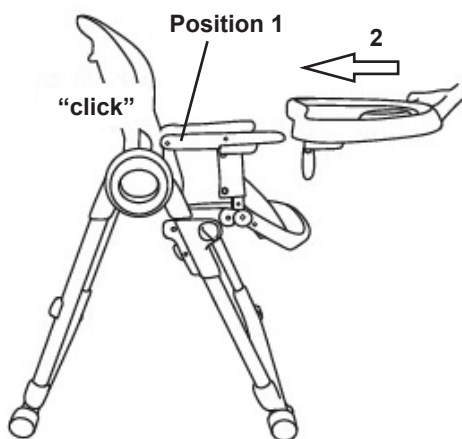


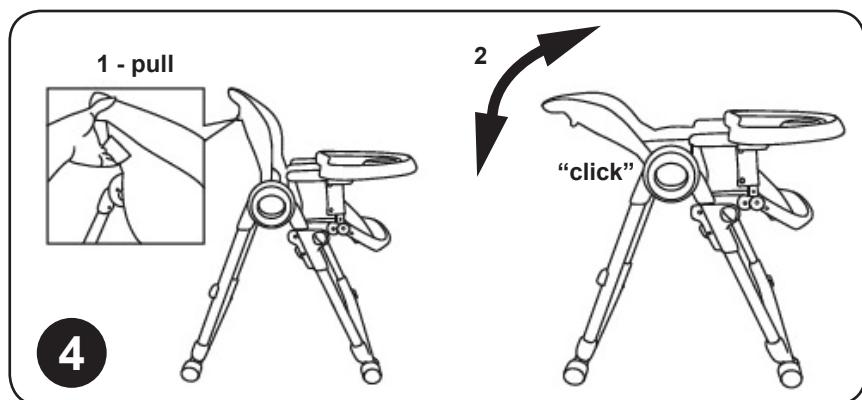
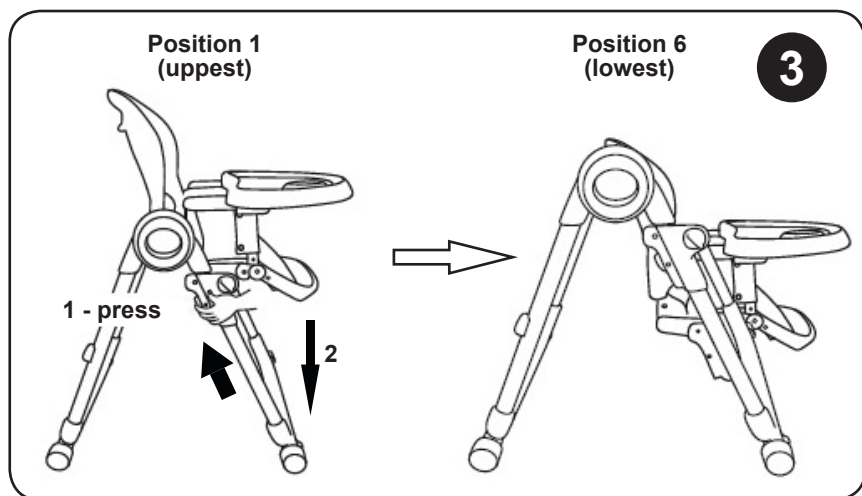
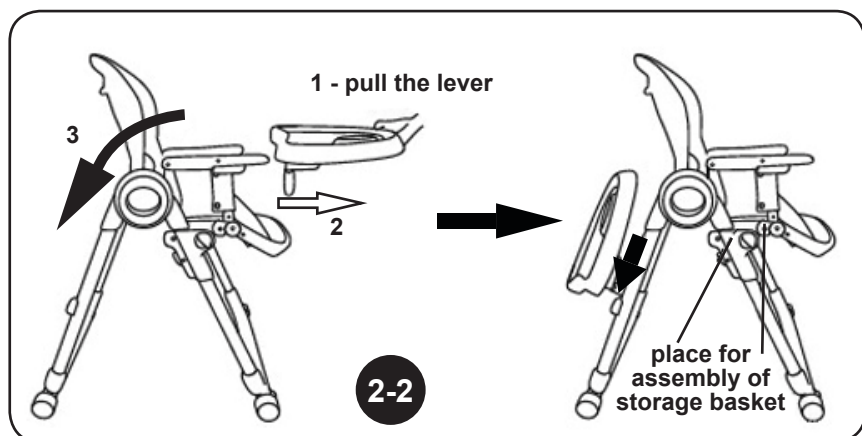
2-1

Position 1

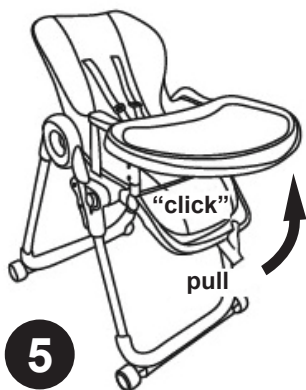
"click"

2

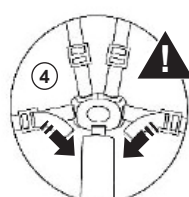
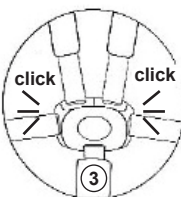
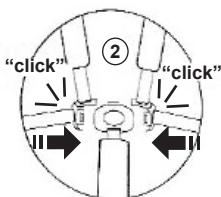
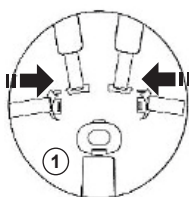
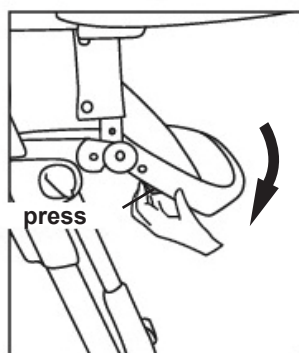




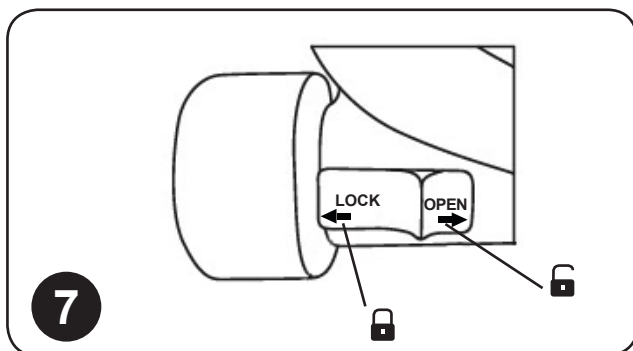
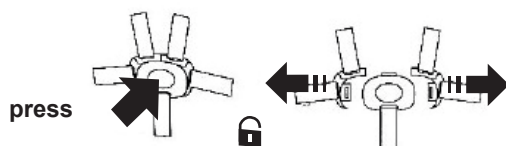
From down to upper position

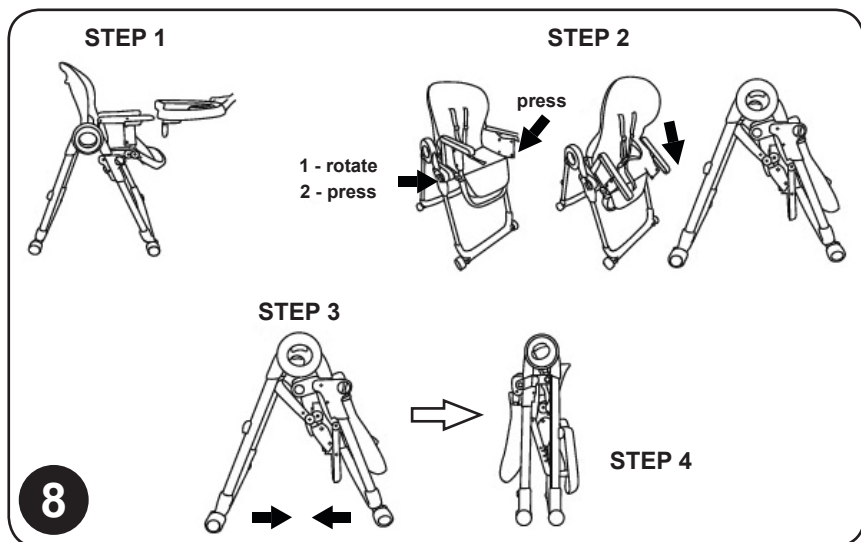


From up to lower position



6





CARE AND MAINTENANCE

- ❖ Clean the fabrics, plastic parts and metal parts with damp cotton cloth or sponge and mild soap.
- ❖ Do not use abrasive, bleach or other aggressive detergents.
- ❖ Always after cleaning leave the high chair fully dry and after that use it or store it. It may appear mold to your high chair if you keep it moist.
- ❖ Do not put any objects and things in high chair or on the top of it to avoid damages of the structure.
- ❖ Always store your high chair indoors. Do not expose to direct environment influence - sun, rain, moisture and high temperature intervals.

Fabric Composition:

Outer: 100% PU leather

Filling: 100% polyester



STHMC020xxxx



1 Goliarnokonarsko shosse, Plovdiv, BULGARIA
www.chipolino.com