

**PLEASE READ CAREFULLY THIS INSTRUCTION MANUAL
AND KEEP IT IN A SAFE PLACE FOR FUTURE REFERENCE!**

**KIDS' TOY
TRICYCLE
„CITY”**

CITY



This product **chipolino** is produced in accordance with Toy safety Directive 2009/48/EC of the European Parliament and the Council, the standards applicable for this toy and the regulations of national legislation.

FOLLOW ALL WARNINGS, INSTRUCTIONS AND RECCOMENDATIONS IN THIS MANUAL IN ORDER TO GUARANTEE THE SAFE USE OF THIS PRODUCT:

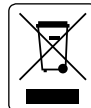
CAUTION! WARNINGS!

- ❖ **CAUTION!** USE ONLY UNDER DIRECT ADULT SUPERVISION!
- ❖ **CAUTION!** THIS TOY HAS NO BRAKES!
- ❖ **CAUTION!** THE TOY IS NOT SUITABLE FOR CHILDREN UNDER 1,5 YEARS!
- ❖ **CAUTION!** USE FOR CHILDREN OLDER THAN 1,5 YEARS AND WEIGHT UP TO 25kg.
- ❖ **CAUTION!** DO NOT USE FOR CHILDREN OVER 25KG – DANGER OF OVERLOADING THE TOY!
- ❖ **CAUTION!** BEFORE USING THE TRICYCLE, TEACH THE CHILD THE CORRECT WAY TO USE IT AND THE SAFETY RULES.
- ❖ **CAUTION!** USE THE TOY ONLY FOR ITS PURPOSE.
- ❖ **CAUTION!** USE THE TOY ONLY DURING THE DAY ON EVEN PLAYGROUNDS AND AT A SAFE DISTANCE FROM STREETS OR ROAD LANES FOR VEHICLES.
- ❖ **CAUTION!** KEEP AWAY FROM FIRE OR OTHER HEAT SOURCES!
- ❖ **CAUTION!** TO AVOID THE DANGER OF INJURY ALWAYS REMOVE THE PUSH HANDLE WHENEVER THE CHILD IS RIDING THE TOY ON HIS OWN!
- ❖ Adult assembly required!
- ❖ **DO NOT** allow presence of children under 3 years before assembly of the TOY is complete. In this way, you will avoid their access to small or loose parts!
- ❖ The TOY is intended for one child at a time **ONLY!**
- ❖ **DO NOT** let other children push the tricycle!
- ❖ The TOY is **NOT** suitable for running or skating!
- ❖ Cease using the TOY if you find missing or damaged parts.
- ❖ **DO NOT** let the child stand on the footrest or the seat to avoid injury.
- ❖ The child must wear shoes when using the TOY!
- ❖ **DO NOT** tie strings or accessories to the TOY in order to avoid the risk of suffocation!
- ❖ **DO NOT** place more than 0,5 kg load in the storage basket.
- ❖ **DO NOT** put items or luggage in the handle bar or the parent handle in order to avoid risk of injury resulting from the toy's instability and tipping over!
- ❖ **DO NOT** place items or heavy objects in the TOY or on it during storage or transportation to avoid damage to the frame.
- ❖ **DO NOT** use another transport means to move the TOY by pulling it.
- ❖ **DO NOT** allow the child using the TOY or other children around it to touch the wheels or put items in them.
- ❖ Use away from rivers, pools, stairs or hurdles!
- ❖ **Do not** make changes or modifications to the TOY frame! If necessary, contact the retailer or an authorized service center for advice and repair.
- ❖ Use only spare parts, which are approved by the producer and recommended by the distributor or company service! The producer revokes all responsibility in case parts different from the original ones have been used.
- ❖ Keep nylon packages away from children to avoid risk of suffocation!

IMPORTANT! WARNINGS AND GUIDELINES FOR BATTERY USE

- ❖ After installation of batteries, always secure the battery compartment with the cover.
- ❖ Do not allow children to access or play with the batteries!
- ❖ Use only batteries of the designated type and power.
- ❖ Do not use batteries of different types.
- ❖ Do not short circuit the contact surfaces!
- ❖ Follow the designated polarity in the battery compartment.
- ❖ Remove damaged or worn out batteries.
- ❖ Remove the batteries when the product will not be used for long time.
- ❖ Do not throw the batteries in open fire. Do not take the batteries to pieces.

CAUTION! Waste from depleted or unusable batteries must be disposed of separately. It is forbidden to throw them out in containers for household waste. Dispose of the batteries only at the specified places.



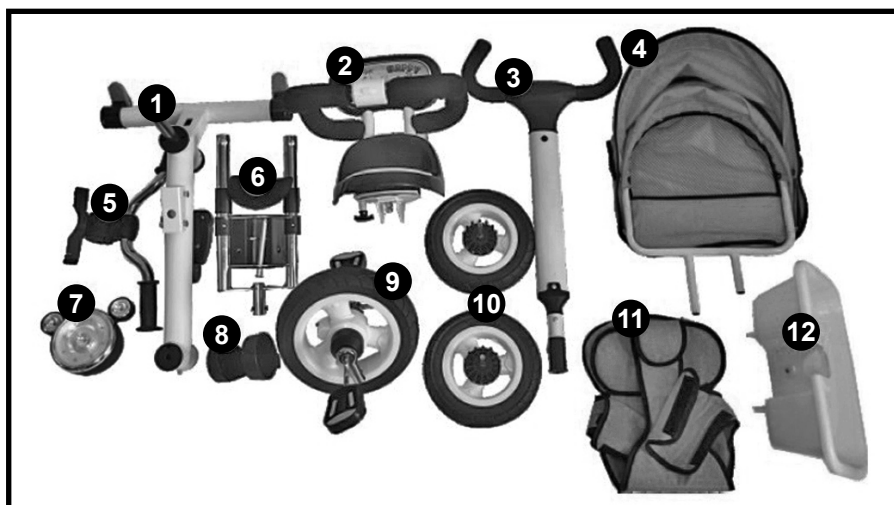
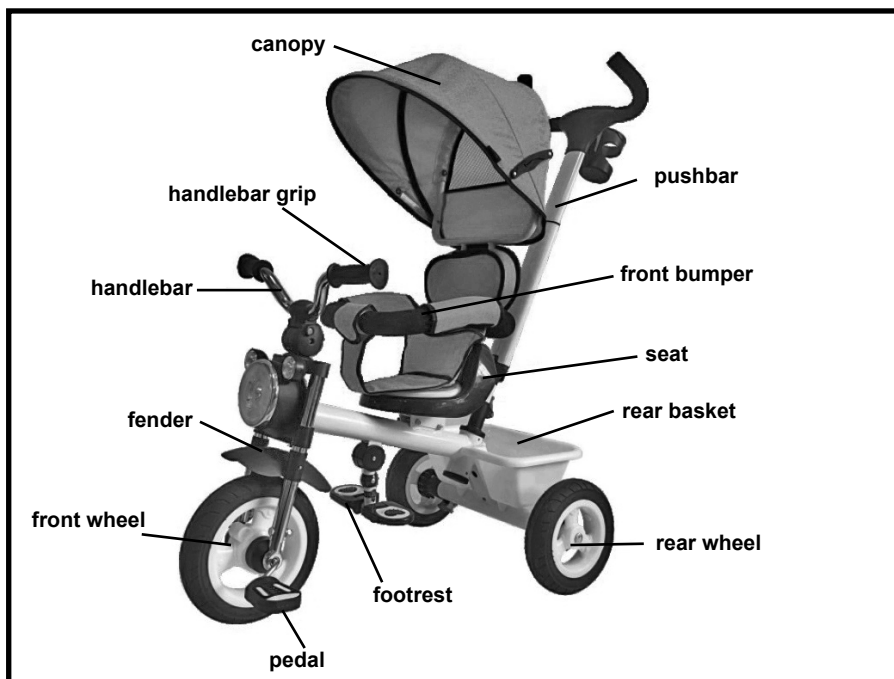
PRODUCT FEATURES

This is a functional TOY whose purpose is to create in the child initial skills to coordinate its arms and feet when riding a tricycle or bicycle.

IMPORTANT! Remove the parent handle when you are sure that the child can ride the tricycle on his own and unaided.

- ❖ Suitable for children older than 1,5 years with weight up to 25 kg
- ❖ Can be driven by the child using the pedals;
- ❖ Can be pushed by an adult and the child lays his feet on the foot rest
- ❖ Two positions of the seat – forward facing and face-to-face mode;
- ❖ Musical box, horn sound and melodies and front light;
- ❖ Safety bumper;
- ❖ Footrest can be folded;
- ❖ Height adjustable push handle;
- ❖ Adjustable canopy;
- ❖ Safety harness;
- ❖ Parking device;
- ❖ Storage basket.

MAIN PARTS



Please, make sure if these parts are in the package.
Some of the parts may be pre-installed by the manufacturer.

| № | PART DESCRIPTION | TYPE | QUANTITY |
|----------|----------------------------|-------------|-----------------|
| 1 | Frame | Set | 1 |
| 2 | Seat with front bumper | Set | 1 |
| 3 | Parent push handle | Set | 1 |
| 4 | Canopy | Piece | 1 |
| 5 | Handlebar | Set | 1 |
| 6 | Front fork | Set | 1 |
| 7 | Music box with front light | Set | 1 |
| 8 | Cup/bottle holder | Piece | 1 |
| 9 | Front wheel | Set | 1 |
| 10 | Rear wheel | Piece | 2 |
| 11 | Upholstery | Piece | 1 |
| 12 | Storage basket | Piece | 1 |

ASSEMBLY INSTRUCTIONS

IMPORTANT! Follow exactly the instructions given and check the pictures. Keep your hands from entrapment!

IMPORTANT! AFTER EACH OPERATION, MAKE SURE THAT YOU HAVE FOLLOWED THE INSTRUCTIONS CORRECTLY AND THE FIXING IS STABLE!

IMPORTANT! Tighten the screws well, without overtightening them. If screws are loose, this could lead to disassembly of some part and injure to the child!

Necessary tools: screwdriver and wrench (not included).

ASSEMBLY

1. ASSEMBLY OF FRONT WHEEL TO THE FRONT FORK

1-1 – Assemble the front wheel to the fork.

1-2 – Fix the wheel with screws and washers on both sides.

2. INSTALLING THE FORK WITH FRONT WHEEL TO THE FRAME

2-1 – Assemble the fork to the frame.

2-2 – Insert the metal rod.

2-3 – Fix the rod with the latch.

3. ASSEMBLY OF HANDLE BAR TO THE FRONT WHEEL AND FORK

3-1 – Put the handlebar to the tube of the front wheel.

3-2 and 3-3 – Fix it with the screw.

4. INSTALLING THE MUSIC BOX WITH LIGHT

4-1 – Place the music box with light to the front fork.

4-2 – Fix it with screws and washers on both sides.

5. INSTALLING REAR WHEELS

6. INSTALLING STORAGE BASKET

Put the protruding part of the basket to the frame. Turn the button in order to fix the basket.

7. ASSEMBLY OF THE SEAT

7-1 – Unscrew the washers and remove the screws and washers from the tricycle frame. Place the seat.

7-2 – Fix the seat with the screws and washers.

8. PLACING THE UPHOLSTERY

Fix the upholstery around the front bumper using the fixing straps.

9. ASSEMBLY OF CANOPY

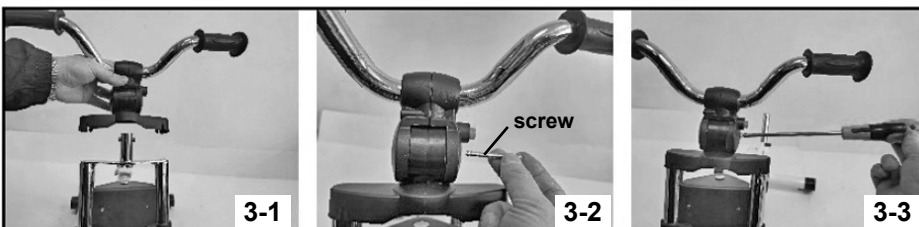
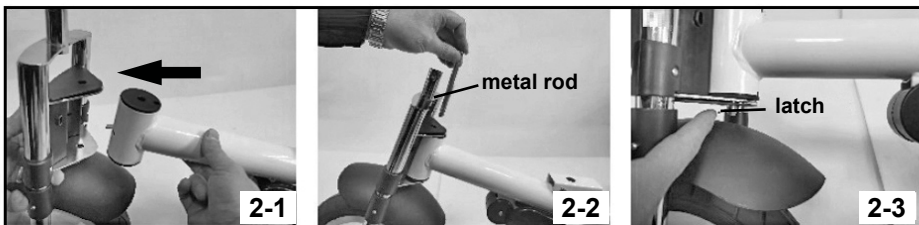
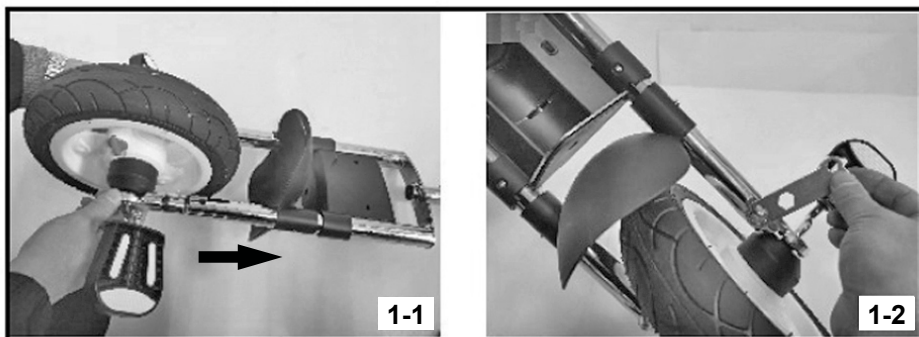
Press the pin on one side of the canopy and press the canopy to the backrest until you hear a click and the canopy is fixed.

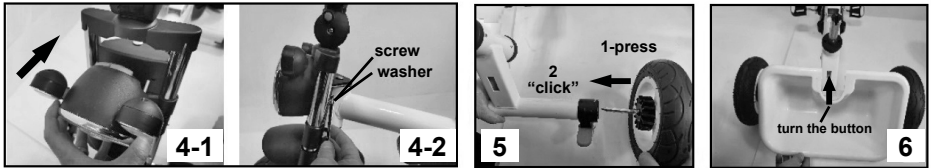
In order to remove the canopy, press the removal button on the back of the backrest and pull out the canopy.

10. INSTALLING THE PUSH HANDLE

Inset the handle in the opening in rear part of the frame. Press down the red latch in order to fix the handle.

11. ASSEMBLY OF CUP/BOTTLE HOLDER



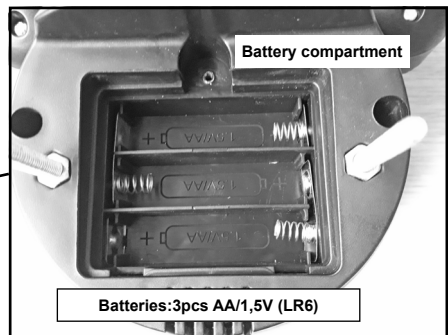
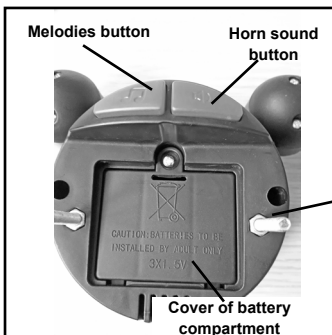


FUNCTIONS

MUSIC BOX WITH LIGHT

Functions:

- melodies (press the melodies button),
- horn sound (press the horn sound button)
- light (melodies and horn sound are supported with activation of front light)



In order to use the functions of music box and light :

1. Open the battery compartment cover using a screwdriver.
2. Remove the cover.
3. Place 3 pcs batteries, type „AA”/1,5V (LR6) by following the marked polarity.
4. Place the batteries compartment cover and fix it with the screw.

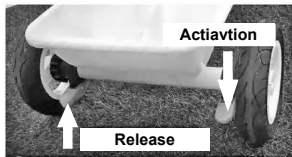
BLUETOOTH

When music box is turned on, the Bluetooth is automatically activated. Turn on the Bluetooth on your device and search for device A5. After you pair with A5, you can play any audio on the tricycle and adjust the volume from your device.

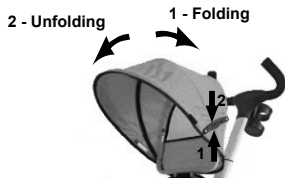


Handle for rotation of seat

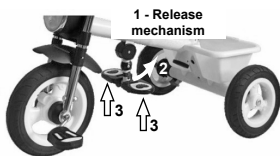
SEAT CAN BE ADJUSTED IN 2 POSITIONS:
FORWARD (facing to the front) and
REARWARD (facing to the back);
Pull the handle under the seat and rotate it to desired direction. When position is fixed you will hear a **click**.



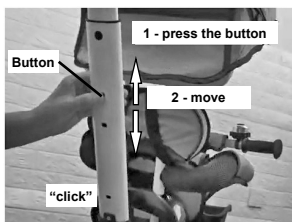
PARKING DEVICE



FOLDING (1) AND
UNFOLDING (2) OF CANOPY



FOLDING THE FOOTREST TO THE FRAME
1 – Pull up the release mechanism
2 – Rotate the footrest
3 – Fold it up.
IMPORTANT! When you guide the tricycle, use the footrest unfolded, when the child rides the tricycle on his own, the footrest must be folded.



ADJUSTING THE HEIGHT OF THE PUSH
HANDLE – **IN 3 POSITIONS**



OPENING AND CLOSING THE FRONT BUMPER

Press the button in order to open the front bumper.

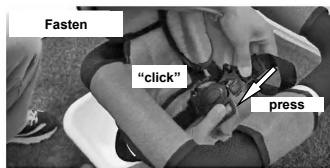


BLOCKING THE PEDALS

Turn the button to the right – child can push the pedals, but it will not move the tricycle

Turn the button to the left – child can push the pedals and move the tricycle.

SAFETY HARNESS



GUIDING THE TRICYCLE WITH THE PARENT PUSH HANDLE.



RIDING THE TRICYCLE BE THE CHILD (AFTER REMOVING THE PUSH HANDLE AND CANOPY).

MAINTENANCE GUIDELINES

- ❖ Periodically check the good working order of the tricycle parts.
- ❖ Do not wash it and do not soak it in water. Use a soft damp cloth and water or neutral liquid detergent.
- ❖ Do not use aggressive detergents, containing abrasive particles, ammonia, bleach or spirits.
- ❖ Regularly oil the moving parts.
- ❖ Do not use on sand.
- ❖ Do not store the tricycle in hot environment, in order to avoid the plastic parts from deforming.
- ❖ Store the product in clean and dry place indoors. Do not expose to direct sunlight, moisture or harsh weather!
- ❖ Always let the tricycle to dry out fully before storing or using it, in order to avoid mold and rust. Contact your authorized dealer if consultation or repair is needed

Materials used: plastic, metal, textile part and filling – 100% polyester.



TRKCY021xxx /331



Bulgaria, Plovdiv, Str. Golyamokonarsko shosse № 1

www.chipolino.com