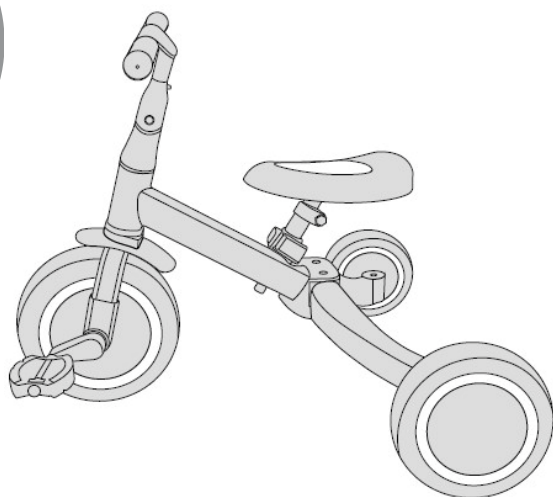


**PLEASE READ CAREFULLY THIS INSTRUCTION MANUAL  
AND KEEP IT IN A SAFE PLACE FOR FUTURE REFERENCE!**

# **INSTRUCTION MANUAL FOR KIDS' TOY TRICYCLE/BALANCE 2 IN 1 „SMARTY”**

**2 in 1  
SMARTY**



This product **chipolino** is produced in accordance with Toy safety Directive 2009/48/EC of the European Parliament and the Council, the standards applicable for this toy and the regulations of national legislation.

**CAUTION! WARNINGS!**

- ❖ **CAUTION!** USE ONLY UNDER DIRECT ADULT SUPERVISION TO AVOID RISK OF FALLING!
- ❖ **CAUTION!** THIS TOY HAS NO BRAKES!
- ❖ **CAUTION!** THIS TOY IS NOT SUITABLE FOR CHILDREN UNDER 1 YEAR OLD!
- ❖ **CAUTION!** TO BE USED BY CHILDREN OVER 1 YEAR AND WEIGHT MAXIMUM 25 kg.
- ❖ **CAUTION!** DO NOT USE FOR CHILDREN OVER 25KG – DANGER OF OVERLOADING THE TOY!
- ❖ **CAUTION!** BEFORE USING THE TOY, TEACH THE CHILD THE CORRECT WAY TO USE IT AND THE SAFETY RULES.
- ❖ **CAUTION!** THE CHILD MUST WEAR A HELMET, KNEE AND ELBOW PROTECTORS AND SHOES WHEN USING THE TOY!
- ❖ **CAUTION!** USE THE TOY ONLY FOR ITS PURPOSE!
- ❖ **CAUTION!** USE THE TOY ONLY DURING THE DAY AND ON EVEN SECURED PLAYGROUNDS AT A SAFE DISTANCE FROM STREETS AND ROAD LANES FOR VEHICLES.
- ❖ **CAUTION!** KEEP AWAY FROM FIRE AND OTHER HEAT SOURCES!
- ❖ **ONLY** an adult should assemble the TOY!
- ❖ **DO NOT** let children under 3 years near the TOY before you have assembled it, to avoid their access to small and disassembled parts!
- ❖ This TOY is intended **ONLY** for one child!
- ❖ **DO NOT** let children to push the toy!
- ❖ The TOY IS **NOT** suitable for running or skating!
- ❖ Cease using the TOY if you find missing or damaged parts.
- ❖ **DO NOT** let the child stand on the seat to avoid injury.
- ❖ The child must wear shoes when using the TOY!
- ❖ **DO NOT** tie strings or accessories to the TOY in order to avoid the risk of suffocation.
- ❖ **DO NOT** leave items or luggage on the handle bar to avoid risk of balance disturbance.
- ❖ **DO NOT** put items or heavy objects on the TOY during transportation and storing to avoid damage of the construction.
- ❖ **DO NOT** move the TOY by pulling it with another transport means!
- ❖ **DO NOT** let the child playing with the TOY or other children near it to touch the wheels or put items inside them!
- ❖ Keep away from rivers, pools, stairs and obstacles!
- ❖ **DO NOT** make changes or modifications to the TOY construction! If necessary, contact the retailer or an authorized service for advice and repair.
- ❖ **DO NOT** use spare parts or other components, which are not provided by the producer! The producer revokes all responsibility in case spare parts have been used, which are different from the original ones or recommended by the producer.
- ❖ Keep the nylon package away from children to avoid risk of suffocation!

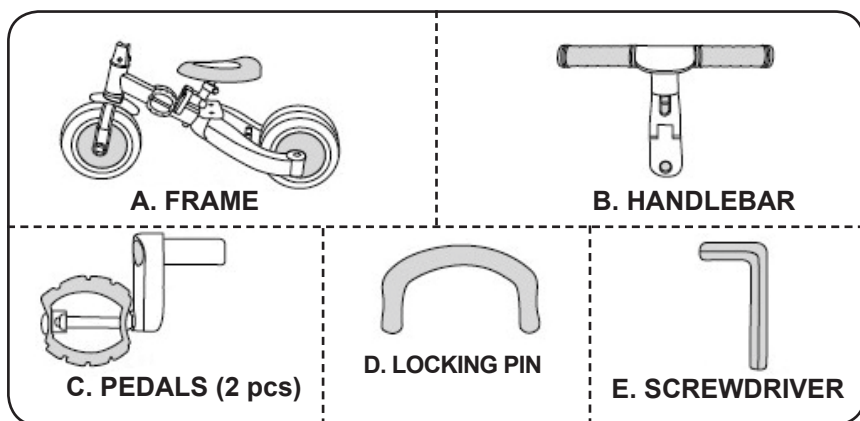
## PRODUCT FEATURES

The TOY is intended for children over 3 years weighing up to 25 kg.

The TOY can be used as tricycle or balance toy on wheels.

- **Toy Balance bike** is kids' bike without pedals that develops in a safe way coordination and feeling for speed, helps child to keep balance and security that comes from constant contact between child feet and the ground. Child learns to balance during bike riding, practicing different movements (turning left and right), and controlling the speed depending on the readiness level.
- **Toy Tricycle** – it is intended to improve child's basic skills related to coordination of hands and legs during riding tricycle or bicycle.

## MAIN PARTS



Please, make sure if all these described parts are available in the package.

Necessary tools: screwdriver (included in the set)

## ASSEMBLY AND USE GUIDE

**CAUTION!** Follow exactly the guidelines and sequence of assembly and use, which you will find in the text and figures.

**CAUTION!** Check fixing is secure after completing each operation!

**CAUTION!** Tighten the screws securely but do not over tighten. Loosening them can lead to disassembly of the product and injury to the child.

## ASSEMBLY OF THE TOY BALANCE BIKE

1. ASSEMBLY OF THE HANDLE BAR.
2. PLACING OF THE LOCKING PIN.

## TRANSFORMING THE TOY INTO TRICYCLE

3. REMOVING THE PEDALS FROM THE FRAME.
4. ASSEMBLY OF THE PEDALS.
5. REMOVING OF THE LOCKING PIN.
6. TAKE REAR WHEELS APART.
7. ROTATION OF REAR WHEELS OUTWARD.

## FUNCTIONS

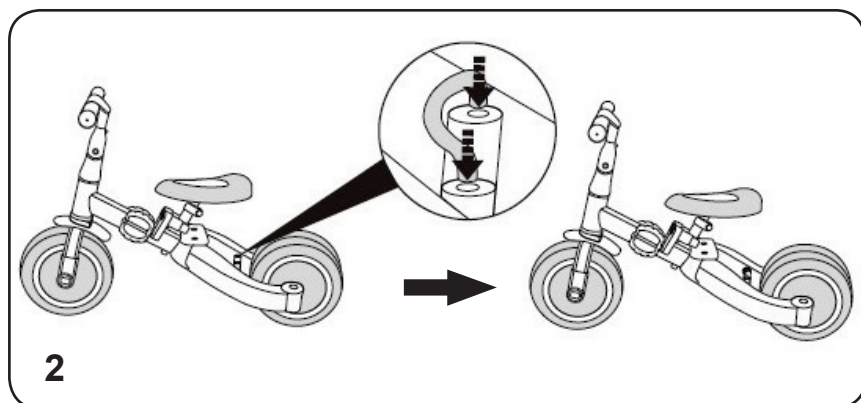
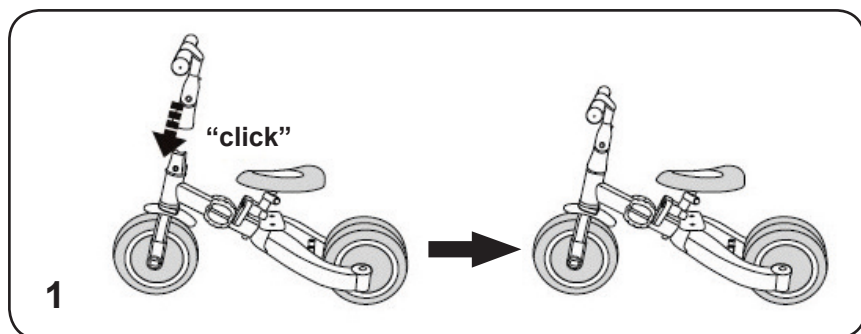
### 8. ADJUSTING THE HANDLE BAR.

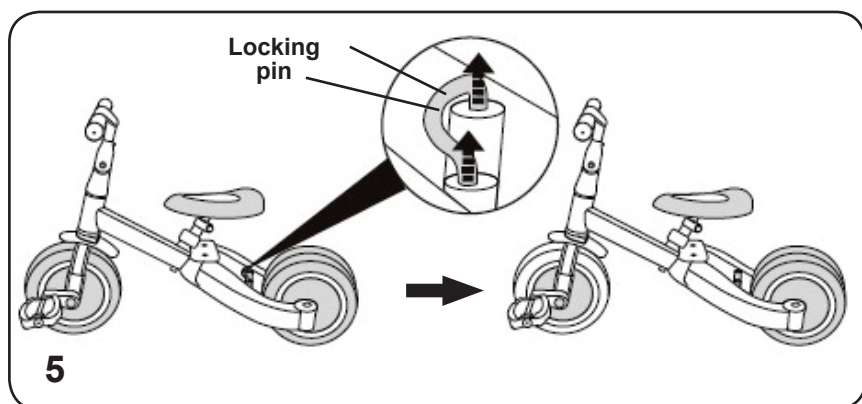
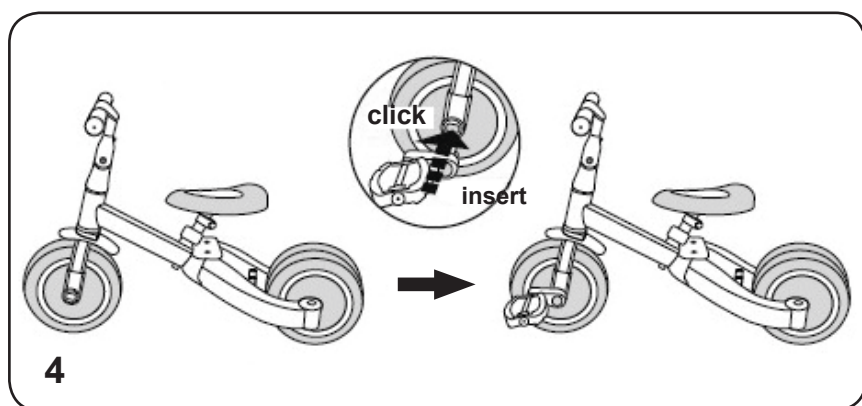
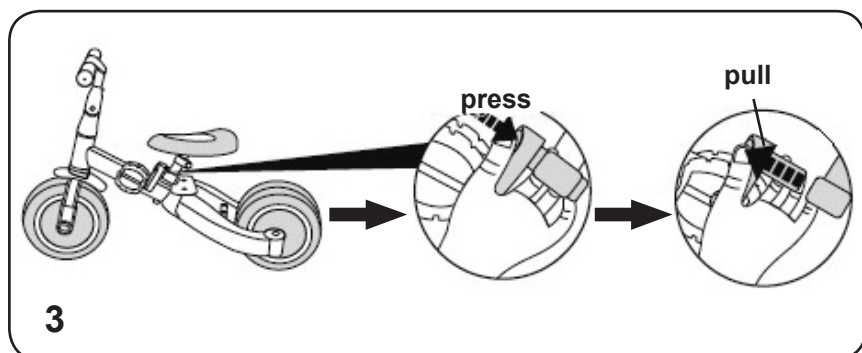
**Note:** Pull up the button and push forward the handle bar (1), then turn the handlebar slightly back until it get fixed and you hear a clicking sound.

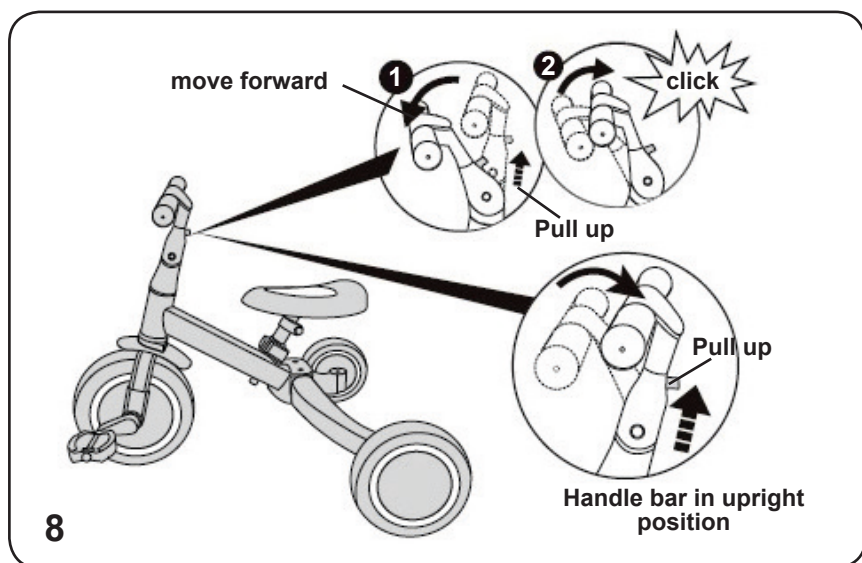
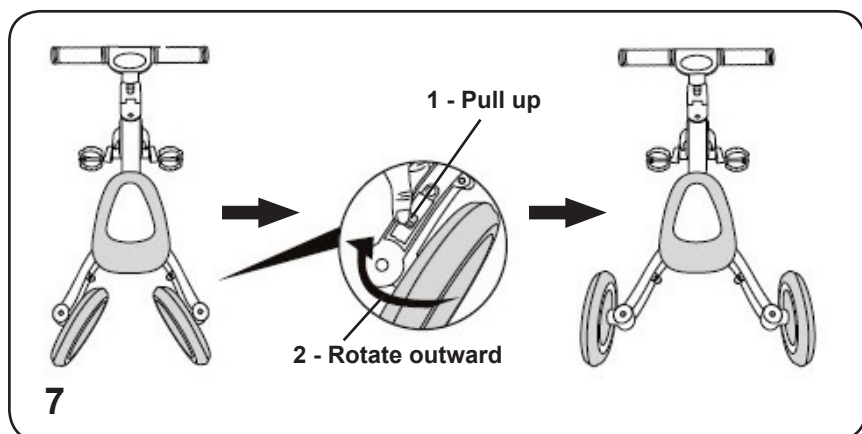
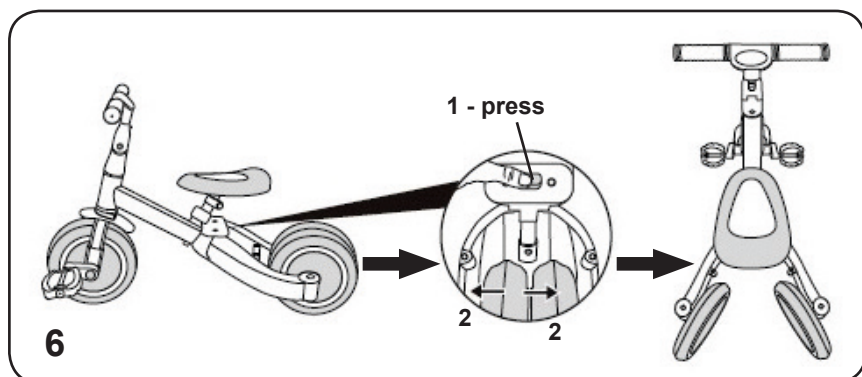
### 9. ADJUSTING THE HEIGHT OF THE SEAT.

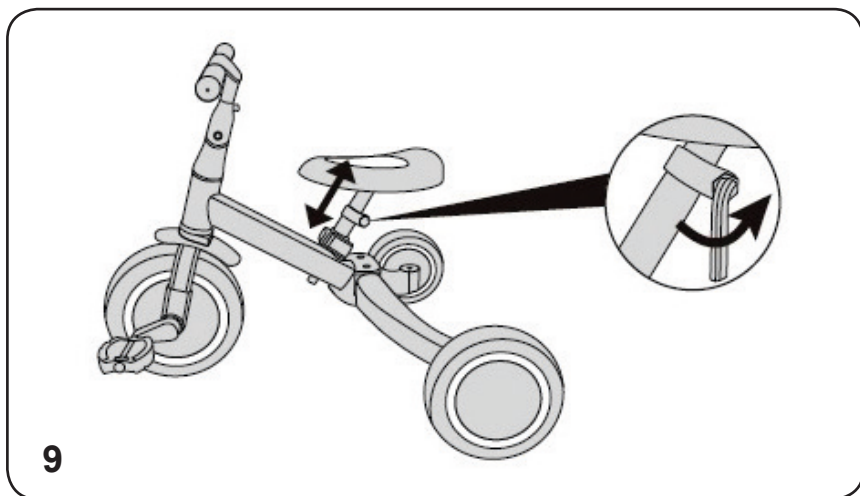
Loosen the screw with a screwdriver to adjust the height of the seat to the desired position, tighten the screw.

**ATTENTION!** Make sure the seat is fixed in the chosen height!









9

## MOST OPTIMAL SEAT POSITION

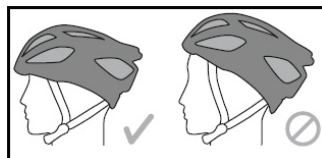
The child should seat comfortably, not bent forward to the handlebar and feet to make complete contact with the ground.

**IMPORTANT!** For beginners, it is advisable initially to use the lowest seat position!

## HELMET, KNEE AND ELBOW PROTECTORS AND SHOES

FOR MORE SAFETY THE CHILD MUST WEAR HELMET, KNEE AND ELBOW PROTECTORS AND SHOES WHILE USING THE PRODUCT!

**The helmet** should be firmly on the head, not pushed back to the back of the head and fitted to protect the forehead.



## CARE AND MAINTENANCE

- ❖ Periodically check the good working order of all parts.
- ❖ Do not wet the TOY. Clean with a soft damp towel and a neutral liquid soap.
- ❖ Do not use aggressive detergents containing abrasive particles, ammonia, bleach or spirit.
- ❖ Regularly oil the moving parts.
- ❖ Do not use on sandy surfaces.
- ❖ Do not store the TOY in areas with hot air or close to heat sources, because it will get deformed.
- ❖ Store the TOY in a clean and dry place. Do not subject to direct environmental influence – sun, rain, moisture or sudden temperature changes!
- ❖ Always dry the TOY or let it dry before storing or using it again. Mildew may appear if you store the product moist.
- ❖ In case of problems related to the normal exploitation, contact the authorized service for advice or repair.

**Materials used:** plastic, metal



**TRKSM020xxx/TR001**





---

1 Golyamokonarsko shosse, Plovdiv, Bulgaria  
[www.chipolino.com](http://www.chipolino.com)