

IMPORTANT! KEEP THIS MANUAL FOR FUTURE REFERENCE!

**INSTRUCTION MANUAL FOR USE OF
CHILD RESTRAINT SYSTEM
„ROTIX”**

ROTIX



This child restraint system **chipolino** is designed and manufactured in compliance with the requirements of Regulation 44 of the United Nations Economic Commission for Europe concerning the safe transportation of children, the provisions of the Product safety Directive 2001/95/EU of the European Parliament and The Council as well as the Consumer Protection Law of Bulgarian Legislation.

NOTICE

1. This is a “UNIVERSAL” CHILD RESTRAINT. It is approved to Regulation No 44, 04 series of amendments, for general use in vehicles and it will fit most, but not all, car seats.
2. A correct fit is likely if the vehicle manufacturer has declared in the vehicle handbook that the vehicle is capable of accepting a “universal” child restraint for these age groups.
3. This child restraint has been classified as “universal” under more stringent conditions than those which applied to earlier designs which do not carry this notice.
If in doubt, consult either the child restraint manufacturer or the retailer.

NOTICE

1. This is an ISOFIX CHILD RESTRAINT. It is approved to Regulation No 44, 04 series of amendments, for general use in vehicles fitted with ISOFIX anchorages systems.
2. It will fit vehicles with positions approved as ISOFIX positions (as detailed in the vehicle handbook), depending on the category of the child seat and of the fixture.
3. The mass groups and the ISOFIX size class for which this device is intended are GROUP 0+ (0-13 kg) and GROUP I (9-18 kg) , ISOFIX class D.

NOTICE

This child restraint is classified Semi-universal use and is suitable for fixing into the seat positions of the following car:

<u>CAR</u>	<u>FRONT</u>	<u>REAR</u> <u>Centre</u>	
Refer to Vehicle list	Yes	Yes	No

Seat positions in other cars may also be suitable to accept this child restraint. If in doubt, consult either the child restraint manufacturer or the retailer.



DO NOT FORGET THAT NO RESTRAINT SYSTEM CAN PROVIDE ABSOLUTE PROTECTION IN CASE OF A CRASH OR ROAD ACCIDENT! DRIVE WITH CARE WHEN THERE IS A CHILD IN YOUR VEHICLE!

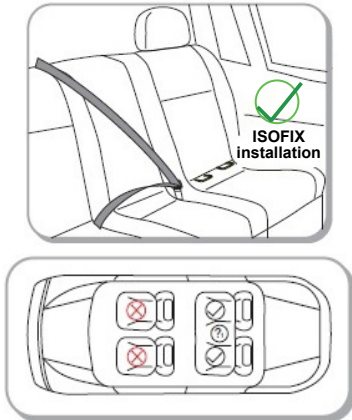


IN ORDER TO ENSURE THE SAFETY OF YOUR CHILD, FOLLOW EXACTLY THE INSTRUCTIONS AND SAFETY RECOMMENDATIONS IN THIS MANUAL!

MISUSE OF THE CAR SEAT WILL CONTRIBUTE TO REDUCING ITS SECURITY AND SAFETY FEATURES! FAILURE OF THE GUIDELINES OF THIS INSTRUCTION INCREASES THE RISK OF SERIOUS INJURY OR DEATH!

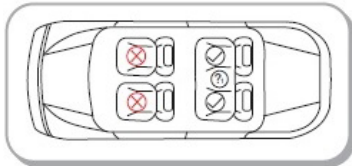

SEAT POSITION OF THE CAR SEAT IN THE VEHICLE



CAUTION! Do not place the restraint system on a vehicle seat equipped with air bag! This may result in death or serious injury!
Review the instructions of the vehicle for information about airbags and conditions of transportation of children.

	<p>CAUTION! This child restraint is suitable for use in vehicles, equipped with approved LAP/3-POINT/STATIC/ WITH RETRACTOR SAFETY BELTS in compliance regulation № 16 of the UN. This child restraint can be installed with the diagonal and lap belt of the vehicle.</p> <p> CORRECT FITTING/PROPER INSTALLATION</p> <p> To be installed on this seat only if it is equipped with diagonal and lap belt.</p>
---	--

CAUTION! This child restraint is suitable for vehicles which are equipped with ISOFIX connectors.

	<p> To be installed on this seat only if it is equipped with ISOFIX attachments.</p>
--	---

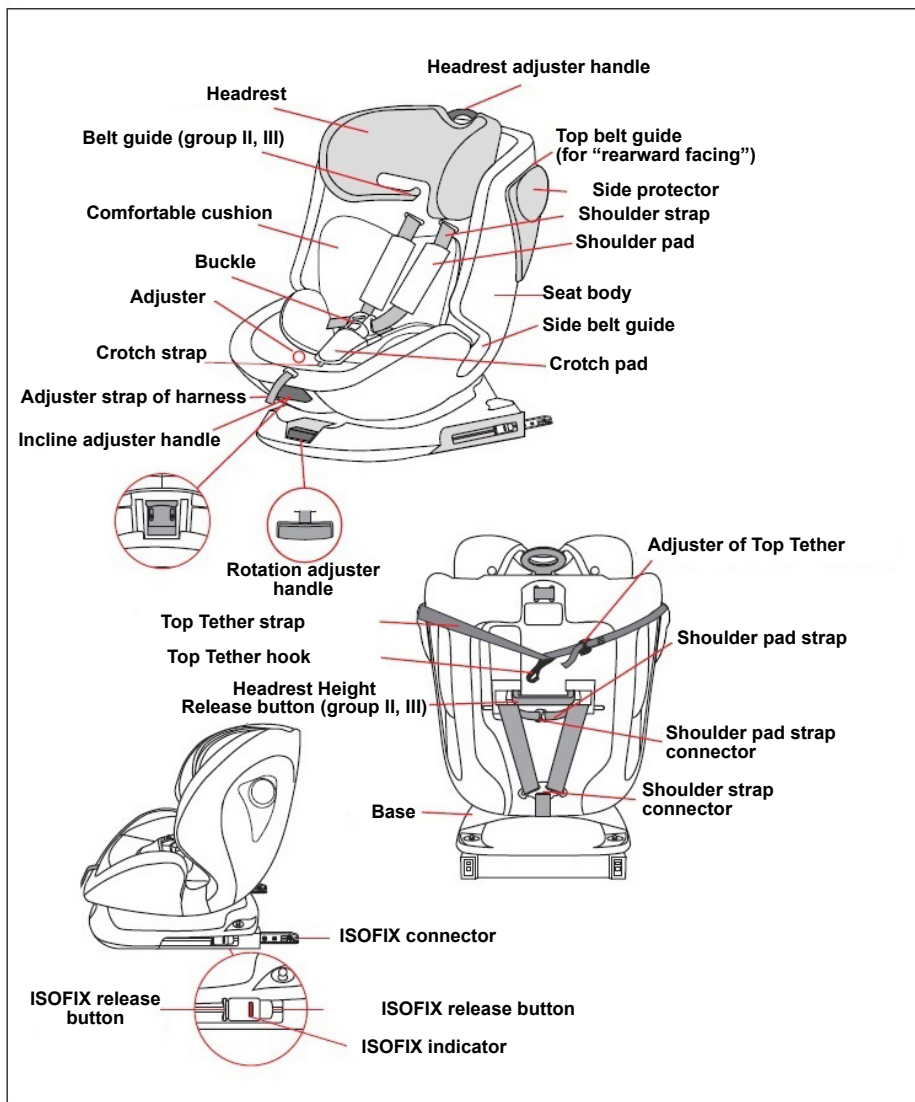
- ❖ **CAUTION!** NEVER LEAVE YOUR CHILD UNATTENDED!
- ❖ **CAUTION!** DO NOT USE ANCHOR POINTS OTHER THAN THE ONES DESCRIBED IN THIS MANUAL AND MARKED ON THE RESTRAINT SYSTEM.
- ❖ **CAUTION!** NEVER INSTALL THE CHILD RESTRAINT IN THE DIRECTION OF VEHICLE MOVEMENT AND FACING FORWARD BEFORE THE CHILD WEIGHT REACHES 9kg!
- ❖ **CAUTION!** THE CAR SEAT SAFETY MUST BE PROPERLY ADJUSTED ACCORDING TO CHILD'S HEIGHT, NOT TWISTED AND SNUG WELL AGAINST BABY'S BODY.
- ❖ **CAUTION!** THIS CHILD RESTRAINT SHOULD NOT BE MODIFIED OR ADAPTED WITH NEW FITTINGS, WITHOUT PREVIOUS AUTHORIZATION BY THE COMPETENT AUTHORITY.
- ❖ **CAUTION!** KEEP AWAY FROM FIRE!
- ❖ Installation in the vehicle and securing the child in the car seat to be done only by adult!
- ❖ The hard parts and the parts of the child restraint made of plastic should be located and installed so that when the vehicle is in normal use, they can not be trapped by a sliding seat or in a door of the vehicle.
- ❖ Do not allow the safety belts of the car seat and the vehicle to be twisted, frayed or torn, latches and locks (buckles) must be always in good order and firmly fixed.
- ❖ If you find uncertainty or defect in the structure, latches, straps or locking mechanisms of the car seat or ISOFIX connectors, discontinue usage until removal of the damaged parts and replacement with new ones.
- ❖ After a violent impact the car seat and belts may be damaged. therefore, it is recommended to replace the car seat with new one.
- ❖ Never use a second hand child restraint. it may have suffered structural damage, which may make the child restraint extremely dangerous.
- ❖ Do not use this car seat without its seat cover and do not replace it with a new one, unless supplied by the manufacturer. The fabric parts are integral parts of the restraint system and its safety features!

- ❖ Always make sure that you are not carrying any unsecured objects, especially on the back shelf, which, in case of an accident, may injure the car's occupants
- ❖ Do not put additional pads except the ones supplied from the manufacturer! Placing additional pads may obscure the safety of your child.
- ❖ Do not use spare parts and other components not supplied by the manufacturer. The manufacturer assumes no responsibility for safety in the event that are used spare parts other than original.
- ❖ It is recommended to cover the car seat if the vehicle is parked under strong sun shine – extreme sun exposure will make the plastic to deteriorate and the fabric to fade. Please, check that the child restraint has not become too hot before placing your child seat.
- ❖ The child car seat does not replace the child's cot or bed. When a child needs a sleep, you have to place him in a suitable baby stroller, baby crib or bed.
- ❖ Do not attach objects with long cords or strings on the car seat in order to avoid danger of suffocation!
- ❖ Never place a child seat on beds, couches or similar soft surfaces!
- ❖ Do not allow children to play with the product!
- ❖ Do not remove stickers and warnings – they contain important information!
- ❖ The packaging of the product must be kept out of the reach of children at the time of and after unpacking in order to avoid the risk of strangulation!

PRODUCT FEATURES

- ❖ **Child restraint restraint while traveling in a vehicle designed for children weighing from 0 to 36 kg, classified in weight groups:**
 - **0+ (0-13 kg):** semi-universal integral ISOFIX child restraint, ISOFIX class D. The restraint system is installed in direction opposite to the direction of the vehicle and the child is "**rearward facing**". It is installed in the vehicle using the 3-point vehicle belt or the ISOFIX connectors and the top tether;
 - **I (9-18kg):** semi-universal integral ISOFIX child restraint, ISOFIX class D. The restraint system is installed in direction opposite to the direction of the vehicle and the child is "**rearward facing**" or in the direction of the vehicle and the child is "**facing forward**"; It is installed in the vehicle using the ISOFIX connectors and the top tether;
 - **I (9-18kg):** universal integral and semi-universal child restraint system. The restraint system is installed in direction of the vehicle and the child is „**facing forward**". It is installed in the vehicle using the 3-point vehicle belt or the ISOFIX connectors and the top tether;
 - **II (15-25kg):** universal non-integral and semi-universal non-integral child restraint system. The restraint system is installed in direction of the vehicle and the child is „**facing forward**". It is installed in the vehicle using the 3-point vehicle belt or the ISOFIX connectors and the top tether;
 - **III (22-36kg):** universal non-integral and semi-universal non-integral child restraint system. The restraint system is installed in direction of the vehicle and the child is „**facing forward**". It is installed in the vehicle using the 3-point vehicle belt or the ISOFIX connectors and the top tether.
- ❖ ISOFIX connectors to vehicle;
- ❖ The restraint rotates 360° on the base;
- ❖ Top tether;
- ❖ Backrest recline in 3 positions;
- ❖ Head rest height adjustment in 13 positions;
- ❖ Safety belts height adjustment;
- ❖ 5-point safety belts;
- ❖ Additional soft pads;

PARTS DIAGRAM



INSTRUCTIONS FOR USE

IMPORTANT!

- Follow exactly the instructions and sequence of installation steps and use of the product described in the text and figures of this manual.
- Check the security of fixing after each operation!
- **ALWAYS CHECK THE SECURITY OF FIXING OF THE SAFETY BELTS!**

1 – BUCKLE OF THE HARNESS

2 – TIGHTENING AND LOOSENING OF THE SAFETY BELT

3 – RECLINE ADJUSTING OF BACKREST – in three positions according to the weight group

IMPORTANT! Before placing the child in the car seat, adjust the backrest recline according to the child's weight group:

Weight group	Child restraint installation	Recline position of the backrest
Group 0+ (0-13 kg) Group I (9-18 kg)	REARWARD FACING	Only Position 1
Group I (9-18 kg)	FORWARD FACING	Position 1 Position 2 Position 3
Groups II and III (15-36 kg)	FORWARD FACING	Position 3

IMPORTANT! Use the incline adjuster handle to make sure the chosen position is well fixed.

4 – REMOVING THE SAFETY BELT (shoulder belts and the soft pads, the crotch belt and the soft pad, belt buckle)

4-1 и 4-2 – Loosen the belt and release the shoulder belts from the shoulder strap connector.

4-3 – Pull out the shoulder straps from the seat openings and remove the soft pads.

4-4 – Thread the buckles of the shoulder straps through the openings.

4-5 – Remove the crotch belt, the soft pad and the buckle.

4-6 and 4-7 – Pull the adjuster strap of harness.

After the removal of harness you can use the car seat for children with weight from 15 up to 36 kg (groups II and III).

5 – ADJUSTING THE HEIGHT OF SHOULDER STRAPS FOR GROUPS 0+ and I

5-1 – Pull up the headrest adjuster handle and move the headrest up. When you reach the desired position you will hear a click.

5-2 – ATTENTION! The shoulder straps must be at the level of child's shoulders.

6 – ADJUSTING THE HEADREST HEIGHT (in 13 positions)

6-1 – For groups 0+ and I – adjust the headrest from position 1 up to position 6.

Pull the handle and at the same time move the headrest up or down according to your child's height.

6-2 – For groups II and III – adjust the headrest from position 6 up to position 13.

Remove the safety harness. Press the headrest height release button. At the same time pull the handle and move the headrest up or down according to your child's height.

7 – 360° ROTATION/CHANGE OF CAR SEAT DIRECTION

7-1 and 7-2 – Pull the rotation adjuster handle and rotate the car seat in desired direction;

7-3 – Release the handle. The position is fixed when you hear a click.

IMPORTANT! Make sure the car seat is securely fixed in the desired direction by shaking it in the opposite direction!

7-4 – Positions of the car seat in the vehicle seat.

Rotated to the side (at 90° to the vehicle door), can be used for putting the child in and taking him out of the car seat.

INSTALLATION IN THE VEHICLE USING THE 3-POINT (DIAGONAL AND LAP) BELT OF THE VEHICLE

8 – Car seat in „REARWARD FACING ” position using the 3-point (diagonal and lap) belt of the vehicle for group 0+ (0-13 kg) (Approximate age from birth up to 18 months)

8-1 – Place the car seat in the vehicle in position „**FACING FORWARD**”, so that the backrest is firmly snug to the vehicle seat.

8-2 – Rotate the seat so it is in „**REARWARD FACING**” position (See 7), adjust the seat recline in **Position 1** and unfasten the safety belt.

Note: The front part of the car seat must be snug to the vehicle seat.

8-3 – Thread the diagonal and lap belt as shown in the picture.

8-4 – Fasten the lap and diagonal belt in the vehicle belt buckle and adjust the belt.

8-5 – Place the child in the seat. Adjust the shoulder straps according to child’s height and fasten the buckle.

In order to remove the car seat repeat the same actions in reverse order.

9 – Car seat in „FORWARD FACING ” position using the 3-point (diagonal and lap) belt of the vehicle for group I (9-18 kg) (Approximate age from 9 months up to 4 years)

9-1 – Place the car seat in the vehicle in position „**FACING FORWARD**”, so that the backrest is firmly snug to the vehicle seat.

9-2 – Pull the 3- point (diagonal and lap) belt of the vehicle.

9-3 – Thread the diagonal and lap belt as shown in the picture.

The diagonal belt must pass above the top edge of the car seat, under the headrest and behind the 5-point safety harness and the soft pad, the lap belt must pass through the side belt guides.

9-4 – Fasten the lap and diagonal belt in the buckle and adjust the vehicle belt.

9-5 – Place the child in the car seat. Fasten the belt in the buckle and adjust the shoulder straps according to child’s height.

9-6 – Position of vehicle’s belt buckle.

To remove the car seat, repeat the same actions in reverse order.

10 – Car seat in „FORWARD FACING” position using the 3-point (diagonal and lap) belt of the vehicle for groups II and III (15-36 kg) (Approximate age from 3 up to 12 years)

10-1 and 10-2 – Remove the 5-point safety harness.

10-3 – Place the car seat in the vehicle in position „**FACING FORWARD**”, so that the backrest is firmly snug to the vehicle seat.

10-4 – Place the child in the car seat. Thread the diagonal and lap belt as shown in the picture.

The diagonal belt must pass through the belt guide under the headrest and the lap belt through the side belt guides.

10-5 – Fasten the lap and diagonal belt in the vehicle belt buckle and adjust the belt.

10-6 and 10-7 – Make sure that the vehicle belts are not twisted and are well fixed.

10-8 – Position of vehicle’s belt buckle.

To remove the car seat, repeat the same actions in reverse order.

INSTALLATION OF CAR SEAT IN THE VEHICLE SEAT USING THE ISOFIX CONNECTORS

11 – Car seat in „REARWARD FACING ” position with ISOFIX connectors and top tether for groups 0+ and I (0-18 kg) (Approximate age from birth up to 4 years)

11-1 – Place the car seat in the vehicle seat in position „**FACING FORWARD**”. Press the ISOFIX release buttons in order to release the ISOFIX connectors. Pull out the connectors. ISOFIX indicator must show „**red**” color.

11-2 and 11-3 – Install the ISOFIX connectors to the vehicle attachments until you hear a click. ISOFIX indicator must show „**green**” color, which shows that the ISOFIX connectors are correctly attached.

11-4 – CAUTION! After the installation check if the car seat is securely fitted. If the car seat is moving or the ISOFIX connectors are out, repeat the described actions and install the car seat again.

11-5 – Rotate the car seat in order to position it in „**REARWARD FACING**” position (See 7). Adjust the backrest recline accordingly (in Position 1) (See 3).

11-6 – Place the child in the car seat. Check the shoulder straps height (See 5) and fasten them in the vehicle buckle.

11-7 – Slide the belt of the top tether over the top belt guides. Release and adjust the belt to the desired length.

11-8 – Attach the hook to the corresponding place in the vehicle.

11-9 – IMPORTANT! Tighten the top tether until the indicator shows „**green**” color. If the indicator does not show green color, you must repeat the installation.

To remove the car seat, repeat the same actions in reverse order.

12 – Car seat in „FORWARD FACING ” position for groups I (9-18 kg) with ISOFIX connectors and the 3-point (diagonal and lap) vehicle belt

12-1 – Place the car seat in the vehicle seat in position „**FACING FORWARD**”. Press the ISOFIX release buttons in order to release the ISOFIX connectors. Pull out the connectors. ISOFIX indicator must show „**red**” color.

12-2 и 12-3 – Install the ISOFIX connectors to the vehicle attachments until you hear a click. ISOFIX indicator must show „**green**” color, which shows that the ISOFIX connectors are correctly attached.

12-4 – CAUTION! After the installation check if the car seat is securely fitted. If the car seat is moving or the ISOFIX connectors are out, repeat the described actions and install the car seat again.

12-5 – Pull the 3- point (diagonal and lap) belt of the vehicle.

12-6 – Thread the diagonal and lap belt as shown in the picture.

The diagonal belt must pass above the top edge of the car seat, under the headrest and behind the 5-point safety harness and the soft pad, the lap belt must pass through the side belt guides.

12-7 – Fasten the lap and diagonal belt in the buckle and adjust the vehicle belt.

12-8 – Place the child in the car seat. Fasten the belt in the buckle and adjust the shoulder straps according to child’s height.

12-9 – Position of vehicle’s belt buckle.

To remove the car seat, repeat the same actions in reverse order.

13 – Car seat in „FORWARD FACING ” position for groups II and III (15-36 kg) with ISOFIX connectors and the 3-point (diagonal and lap) belt of the vehicle

13- 1 and 13-2 – Remove the 5-point safety harness.

13-3 – Place the car seat in the vehicle seat in position „**FACING FORWARD**”. Press the ISOFIX release buttons in order to release the ISOFIX connectors. Pull out the connectors. ISOFIX indicator must show „**red**” color.

13-4 and 13-5 – Install the ISOFIX connectors to the vehicle attachments until you hear a click ISOFIX indicator must show „**green**” color, which shows that the ISOFIX connectors are correctly attached

13-6 – CAUTION! After the installation check if the car seat is securely fitted. If the car seat is moving or the ISOFIX connectors are out, repeat the described actions and install the car seat again.

13-7 – Place the child in the car seat. Thread the diagonal and lap belt as shown in the picture.

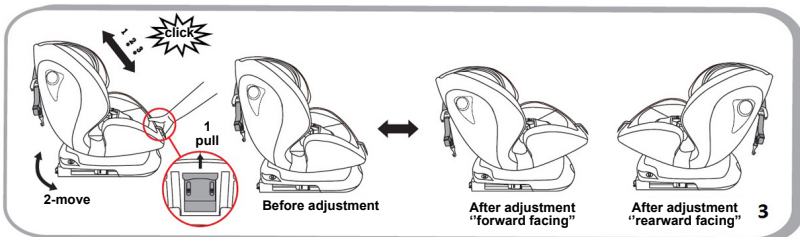
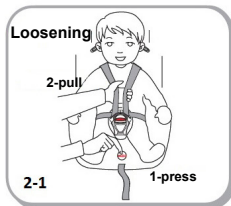
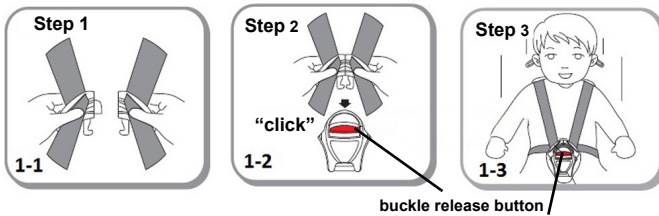
The diagonal belt must pass through the belt guide under the headrest and the lap belt through the side belt guides.

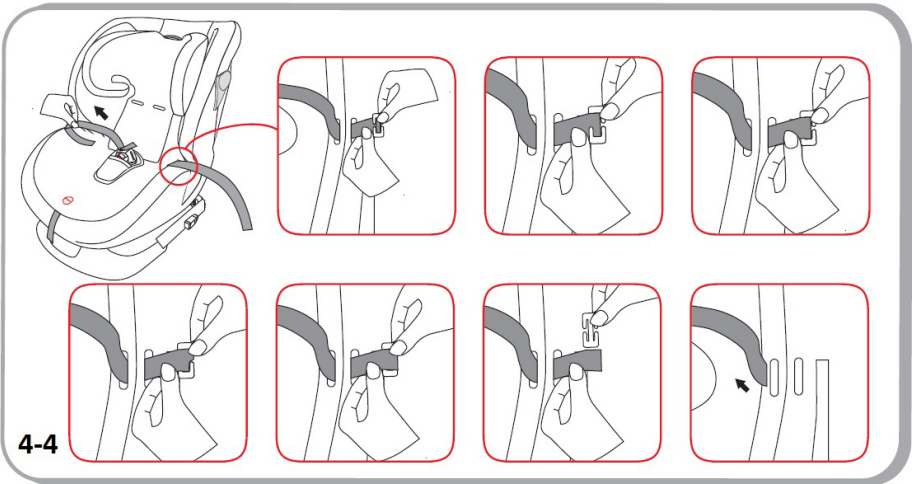
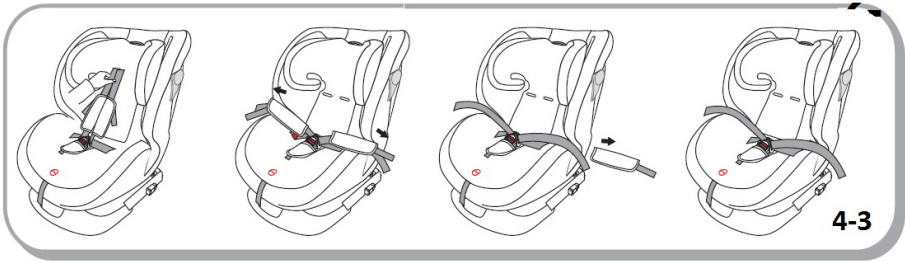
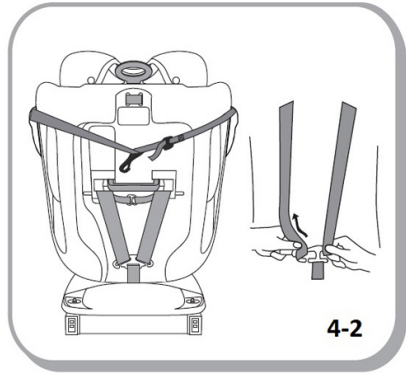
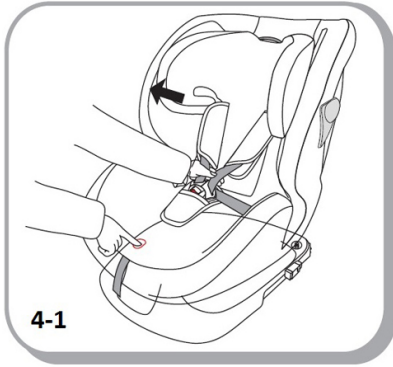
13-8 – Fasten the lap and diagonal belt in the vehicle belt buckle and adjust the belt.

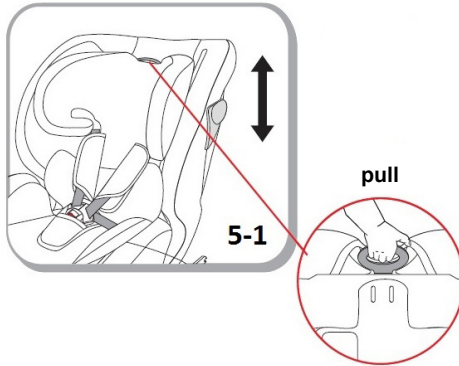
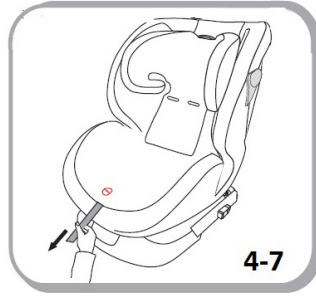
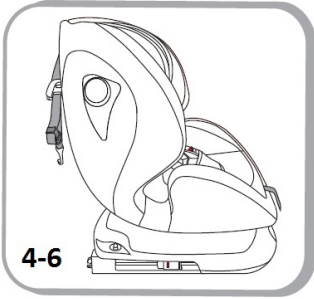
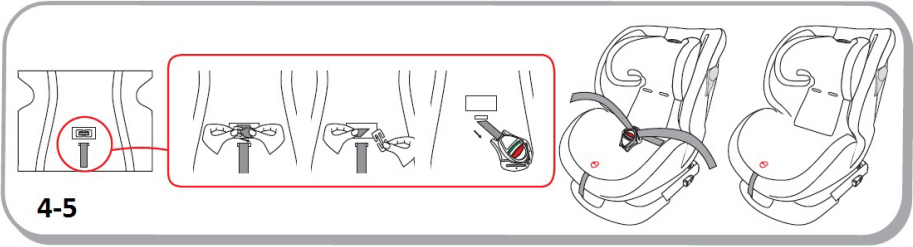
13-9 and 13-10 – Make sure that the vehicle belts are not twisted and are well fixed.

13-11 – Position of vehicle's belt buckle.

To remove the car seat, repeat the same actions in reverse order.



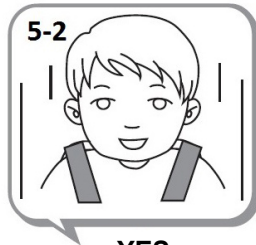




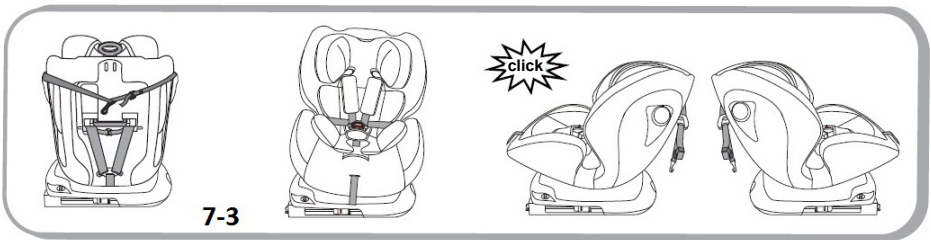
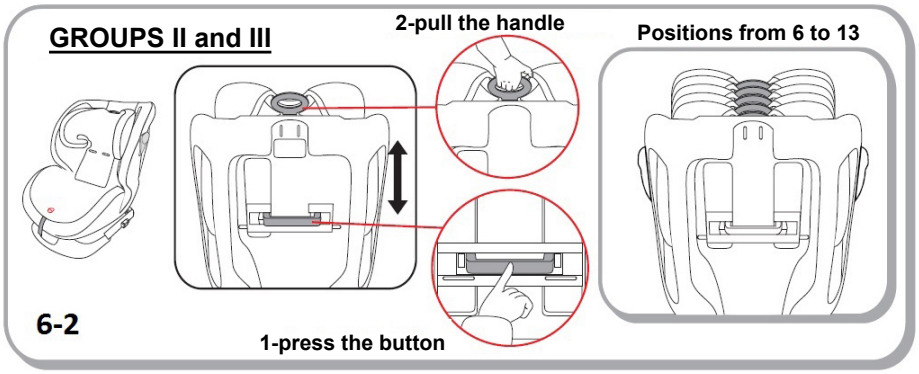
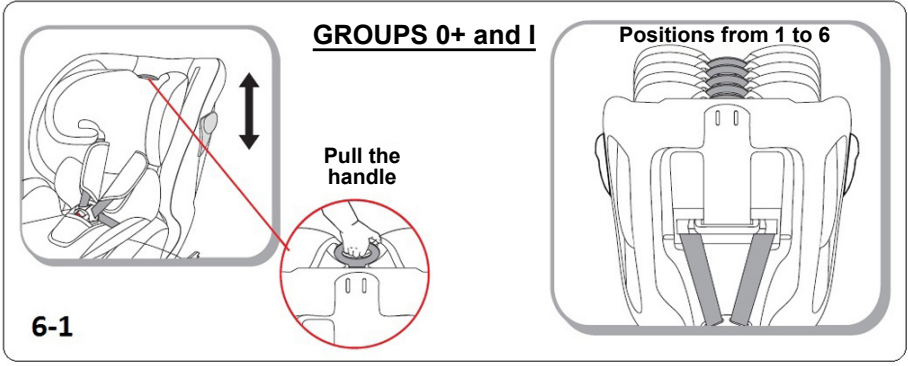
NO
Too low

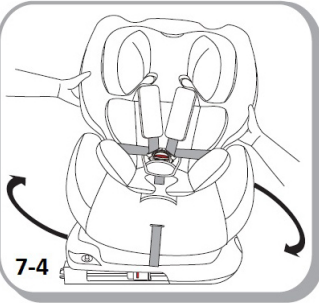



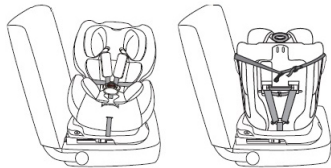


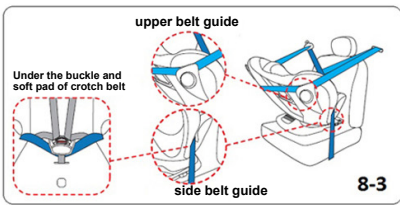
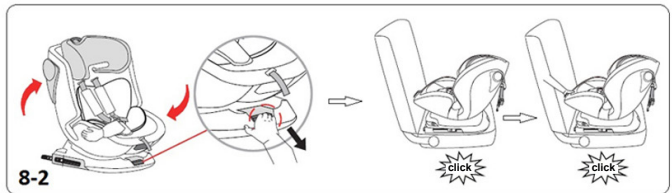
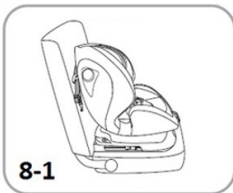
NO
Too high



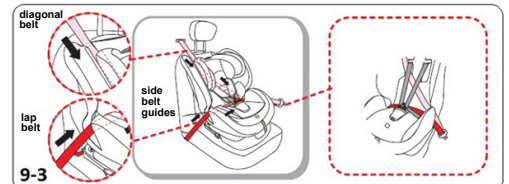
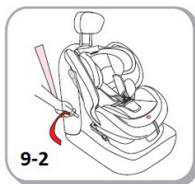
YES
Correct

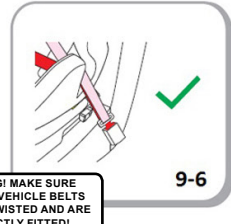
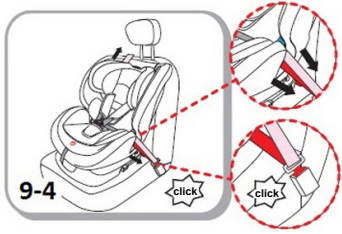


 <p>7-4</p>	<p>ATTENTION! DANGER! Before using the car seat make sure that the seat is well fixed by trying to rotate the seat in both directions.</p> <p>CAUTION! Do not drive if the car seat is not placed in a „FORWARD FACING” or „REARWARD FACING”.</p>		
			
<p>Position „REARWARD FACING” Only for groups 0+ and I Installation with ISOFIX connectors and top tether</p>	<p>Position „REARWARD FACING” Only for groups 0+ and I Installation with 3-point vehicle belt</p>	<p>Position „FORWARD FACING” Only for groups I, II and III</p>	<p>Position „TO THE SIDE”</p>

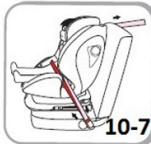
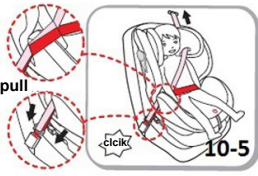
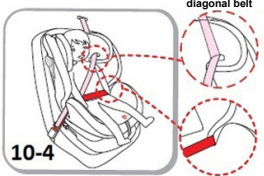


WARNING! MAKE SURE THAT THE VEHICLE BELTS ARE NOT TWISTED AND ARE CORRECTLY FITTED!

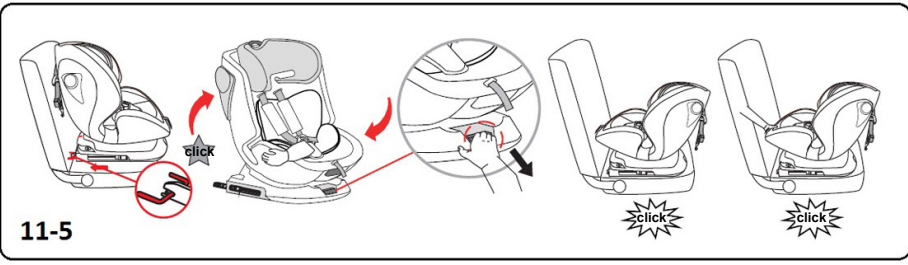
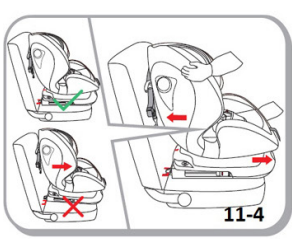
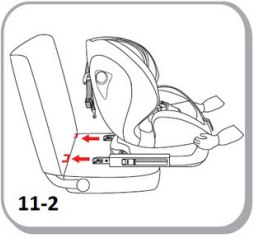
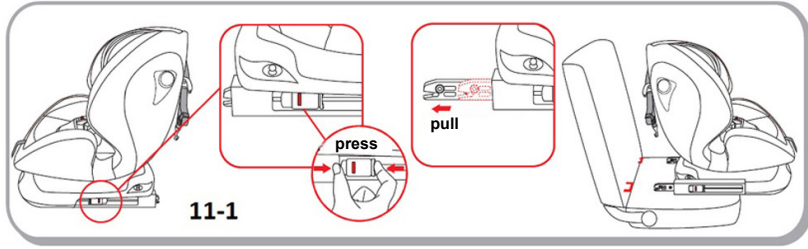


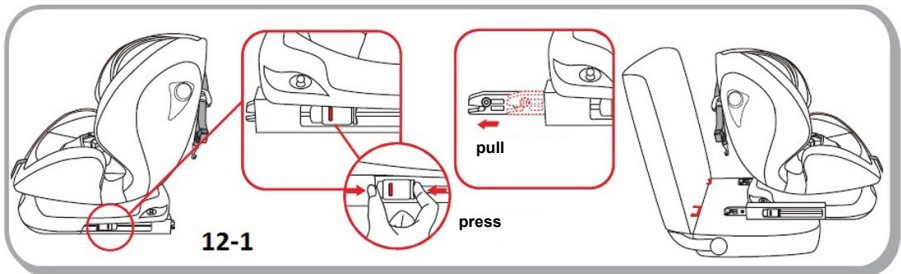
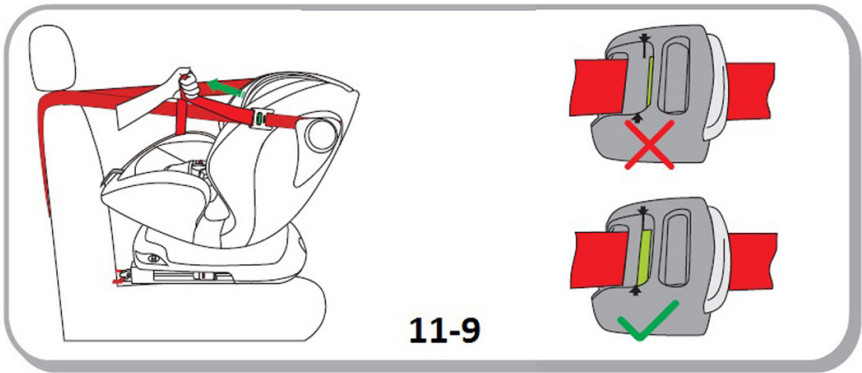
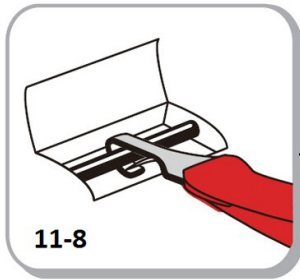
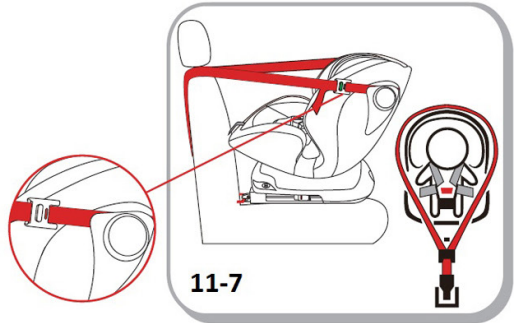


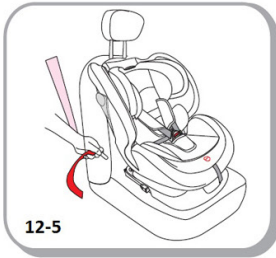
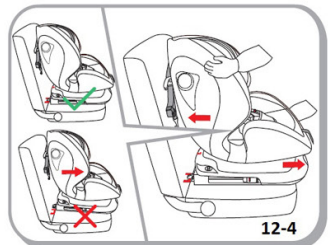
WARNING! MAKE SURE THAT THE VEHICLE BELTS ARE NOT TWISTED AND ARE CORRECTLY FITTED!



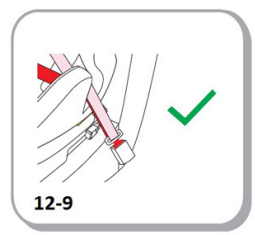
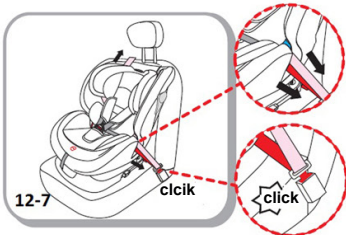
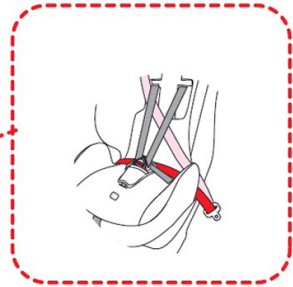
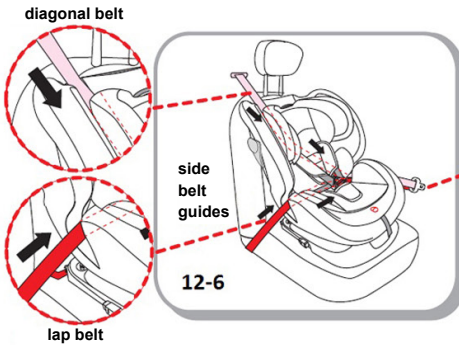
WARNING! MAKE SURE THAT THE VEHICLE BELTS ARE NOT TWISTED AND ARE CORRECTLY FITTED!

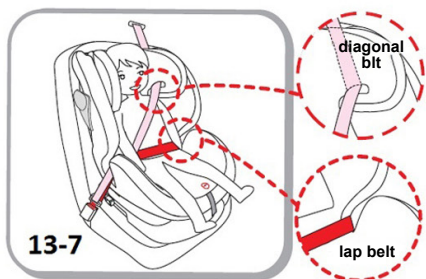
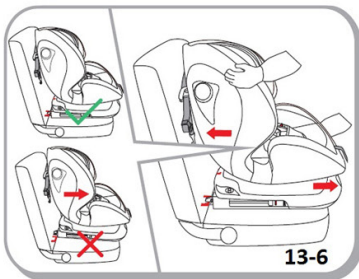
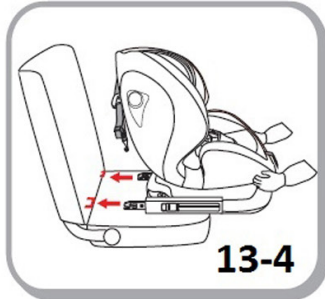
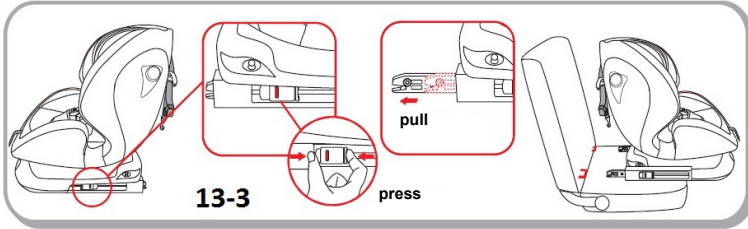
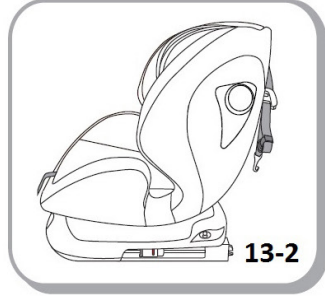


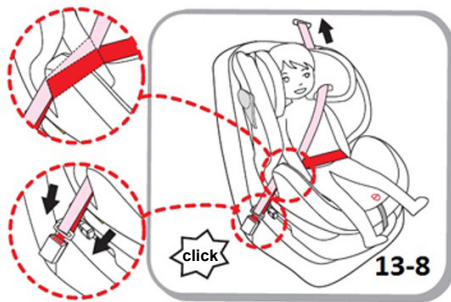




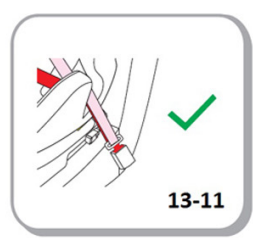
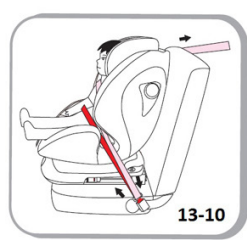
WARNING! MAKE SURE THAT THE VEHICLE BELTS ARE NOT TWISTED AND ARE CORRECTLY FITTED!







WARNING! MAKE SURE THAT THE VEHICLE BELTS ARE NOT TWISTED AND ARE CORRECTLY FITTED!



CARE AND MAINTENANCE

- ❖ Clean the fabrics, plastic parts and metal parts with damp cotton cloth or sponge and mild soap. Upholstery may be hand washed at 30°C using mild detergent!
- ❖ Do not bleach! Do not tumble dry! Do not machine wash! Do not iron!
- ❖ Do not use abrasive, bleach or other aggressive detergents.
- ❖ Always after cleaning leave the car seat fully dry and after that use it or store it.
- ❖ Harnesses must be cleaned with damp cloth and mild soap!
- ❖ Do not wet or remove the stickers. They contain important information!
- ❖ Always store your car seat indoors – on dry and clean place. Do not expose to direct environment influence - sun, rain, moisture and high temperature intervals.
- ❖ Please, contact your authorized dealer for problems connected with the use or repair.

Materials used: plastic, metal, textile

LIST OF VEHICLE EQUIPPED WITH ISOFIX SYSTEM
For use of semi-universal integral ISOFIX child restraint system

*There may be other vehicles where there are suitable places to install this child restraint system.

	Trade name of vehicle	Model(s) of vehicle
1	ALFA ROMEO	156 Cross Wagon Q4, 156 Sportwagon, MiTo
2	AUDI	A1, A1 Sportsback, A2, A3 (5 doors), A3 (3 doors), A3 Sportsback, A3, A3 (facelift), A4, S4, RS4, A5, A5 Cabrio, S5 Cabrio, A5 Cabrio, A5 Sportback (5 doors), A6, S6, A6 Allroad Quattro, A6 Avant, A7 Sportsback (4 seats), A7 Sportsback (5 seats), A8, S8, Q3, Q5, Q7, TT, TT Roadster
3	BMW	5 series, 5 GT, 5 Touring, 6 series, 6 Coupe, 6 GranCoupe, 7 series, M5, Mini, Mini 2, Mini Club Man, Mini Countryman, X1, X3, X5, X6, Z4
4	CADILLAC	CTS
5	CHEVROLET	Aveo, Aveo Hatchback, Captiva, Cruze SW, Epica, HHR, Lacetti, Matiz, Nubria, Orlando, Spark, Volt
6	CHRYSLER	Crossfire, 300 C, Grand Voyager, PT Cruiser, Sebring, Voyager, Voyager Shown Go
7	CHRYSLER DODGE	Caliber, Journey, Nitro, Ram (1500/5 doors)
8	CHRYSLER JEEP	Cherokee, Grand Cherokee, Commander, Wrangler
9	CITROËN	Berlingo I, Berlingo II, Berlingo III, Berlingo Multi Space, C1, C2, C3 Pluriel, C3 Picasso, C3, C4 II, C4 Aircross, C4 Picasso, C4 Picasso, C4 Grand Picasso, C4 Grand Picasso, C5 Break, C5, C6, C8, C-Crosser, DS3, DS4, DS5, Jumpy, Nemo
10	FIAT	Bravo (Typ 198), Croma, Doblo, Dublo II, Fiorino Qubo, Freemont, Idea, Multipla, Panda, Punto (Typ 188), Punto (Typ 199), Punto EVO, Grande Punto, Stilo, Stilo Multi Wagon, Scudo 2, Ulysse
11	FORD	C-MAX, Grande C-MAX, Fiesta (MK7/5 doors), Focus, Focus Turnier, Focus Turnier, Galaxy, Kuga, Maverick, Mondeo, Mondeo Turnier, Mondeo Turnier, S-MAX, Touneo Connect, Transit/Transit Connect, Transit Kombi
12	HONDA	Accord (4+5 doors), Accord Tourer (5 doors), Accord Tourer, City (4 doors), Civic 9, CR-V, FR-V (6 seats), Jazz (5 doors), Pilot
13	HYUNDAI	Getz, H-1 Travel, i10, i20, i30+i30cw, i40, i40cw, ix20, ix35, ix55, Matrix, Santa Fe, Sonata, Sonica, Sonata, i40, Terracan, Tucson
14	JAGUAR	S, XJ
15	JEEP	Grand Cherokee, Wrangler Unlimited
16	KIA	Carens, Carnival, Cee'd, Pro Cee'd, Cerato, Magentis, Opirus, Picanto, Picanto, Picanto (3 doors), Rio, Rio (5 seats), Sedona, Sorento, Soul, Sportage, Venga

17	LANDROVER	Discovery2, Discovery3, Discovery (facelift), Freelander 1, Freelander 2, Range Rover, Range Rover Evoque, Range Rover Sport
18	LEXUS	CT 200h, iS, GS 450h, RX 300, RX 350, RX 400h
19	MAZDA	2 series, 3 series, 5 series, 6/Atenza Kombi, 6 Sport Kombi, CX5, CX7, MPV, MX5 (Typ NB/2 seats), Premacy
20	MERCEDES BENZ	A class, B class, C class, C(W204/S204), C Coupé, C (Model T), CL class, CLS class, CLS(C218) class, E class, E(W211/S211), E(C207/W212/S212), E(A207), E Cabrio(A207), G(W463), GL, GLK, M, ML, R(W251/V251), S, Vaneo, Viano, Viano, Viano fun, Vito
21	MITSUBISHI	Colt(5 doors), Grandis, i-MiEV, Lancer Kombi, Lancer, Outlander, Pajero V80, Shogun
22	NISSAN	Almera, Cuba(Z12), Juke, Maxima(A33), Micra(K11), Micra(K12), Micra(K13), Micra Cabrio, Murano, Navara, Note, Pathfinder, Pathfinder(R51), Pixo, Primera (P11) Traveller, Primera (P12), Qashqai, Qashqai+2, Tiida, X-Trail
23	OPEL	Agila B, Ampera, Antara, Astra, Astra J, Astra J GTC, Astra J Sport Tourer, Astra Twin Top, Combo C, Corsa C, Corsa D(5 doors), Corsa (4 doors), Insignia, Insignia Sports Tourer, Meriva, Meriva B, Signum, Vectra, Zafira A, Zafira B, Zafira B, Zafira C Tourer
24	PEUGEOT	1007, 206cc, 206SW, 207CC, 208, 307, 307SW, 307 SW (5 doors), 308, 308 CC, 308 SW, 308 SW, 3008 Crossover, 4007, 4008, 508, 508 SW, 5008, 807, Expert, Partner (5 doors), Partner Tepee
25	PORSCHE	Cayenne, Panamera
26	RENAULT	Cilo III, Cilo Grandtour III, Espace, Grande Espace, Fluence, Kangoo, Kangoo be bop, Koleos, Laguna III, Laguna Grandtour, Laguna Grandtour III, Megane Cabrio, Megane, Megane II, Megane III, Megane III Grandtour, Modus, Modus, Grand Modus, Scenic, Scenic II, Scenic III, Grand Scenic, Traffic, Twingo, Twingo II, Vel Satis
27	SEAT	Alhambra, Allea FR/XL/Freerack, Arosa, Exeo, Exeo Kombi, Exeo ST, Ibiza(6J), Ibiza(6K), Leon, Mii, Toledo M1, Toledo
28	SKODA	Citigo, Fabia II, Felicia, Octavia, Octavia II, Octavia II, Octavia II, Octavia Tour, DriveRoomster, Superb, Superb II, Superb Kombi, Yeti
29	SMART	Forfour, fortwo, fortwo II
30	SUBARU	Forester, Impreza, Legacy, Outback, Trezia, Tribeca
31	SUZUKI	Alto, Ignis, Jimmy, Kizashi, Splash, Swift, SX4, Vitara, Wagon R

32	TOYOTA	Auris, Auris Hybrid, Avensis, Avensis Verso, Avensis Combi, Aygo, Corolla, Corolla Verso, iQ, Land Cruiser 120, Land Cruiser (J12), Land Cruiser V8, Land Cruiser, Prius+, Prius 3, RAV 4, Urban Cruiser, Verso S, Yaris (5 doors), Yaris III
33	VOLVO	C70, S40, S60, S80, V50, V60, V70, XC70, XC80, XC90
34	VW	Amarok, Beattle, Bora, Caddy, CC, EOS, EOS, FOX, Golf IV, Golf IV, Variant, Golf V, Golf V (R32), Golf V Variant, Golf Cabrio, Golf V Plus, Golf VI, Golf VI Cabrio, Golf VI R, Golf VI Variant/Plus, Lupo, Passat, Passat B7 Altrack, Passat B7 Variant, Phaeton, Polo, Polo V, Cross Polo IV, Cross Polo V, Scirocco III, Sharan, Sharan II, T4 Caravelle CL/GL, T4 Multivan II, T5 Multivan, T5 Caravelle, T5 Caravelle (long version), T5 Kombi, T5 Kombi (long version), Tiguan, Touareg, Touareg II, Touran, Touran Cross, Up
35	Tianjin Xiali	TJ7101AE3, TJ7101ALE3, TJ7101AUE3, TJ7101AULE3, TJ7101BE3, TJ7101BLE3, TJ7101BUE3, TJ7101BULE3, TJ7141AE3, TJ7141ALE3, TJ7141AUE3, TJ7141AULE3, TJ7141BE3, TJ7141BLE3, TJ7141BUE3
36	BYD	F0, F3, F3R, G3, G3R, ,G5, G6, S6, S7, F3DM, E6, L3, M6, F6, S8
37	Great Wall	C20R, M2, C30, C50, M4, C70, M1, H6, H8, H1, H2,
38	Geely	MR7131D, MR7150B4, MR7151B4, MR7151EA4, MR7152D, MR7180D, MR7181, MR7181B1
39	Lifan	LF7130F, LF7131B, LF7132B, LF7152, LF7162B, LF7162E
40	Haima	7161, 7162, 7163, 6480, Haima 3, M2, M3, M5, M8, M6, S6, S7
41	Beijing auto	BJ20, BJ80, S2, S3, S6, H3, H2, H6, D20, CC, D50, D60, D70, D80, X25, X65, X55, M20, M30, T205-D
42	FODAY	F16, F22, F128
43	GAC	GA3, GA5, GA6, GS4, GS5, , GX5, GX6, GL, GP150, G3, G5
44	LANDWIND	X5, X7, X8, X9, X6
45	CHERY	E3, E5, M7, A3, A5, X1, G2, M1, M5, G3, G5, G6
46	ZOTYE	Z700, SR7, E30, Z100, Z300, Z500, T200, X5, T600, V10, E20, E200, T300, M300, Z200

CHIPOLINO

Bulgaria, Plovdiv, Str. Golyamokonarsko shosse № 1

www.chipolino.com