

SHORT FORM PRESENTATION

**DOMEL<sup>®</sup>**



**DOMEL<sup>®</sup>**

---

*We create motion*

## MISSION

---

Domel is a socially responsible company. Being a global developmental supplier of state-of-the-art solutions for electromotor drives and components based on our own innovative technologies ensures the growth and sustainable development of the Domel Group and provides high-quality employment opportunities for the wider region.

Domel draws its creative energy from its rich industrial tradition, and is one of the largest global producers of electric motors and suction units, where it has a 60 per cent share of the European market. Through our network of representative offices, Domel is present on all of the world's leading markets. We are a developmental supplier with a clear vision and in-house development, through which we create trends and technical solutions at all levels of individual products and devices. Domel has received numerous awards from independent technical and consumer organizations, our laboratories are part of the national and international development network, we invest a great deal into social responsibility and enjoy long-standing collaboration with manufacturers in numerous branches of industry.

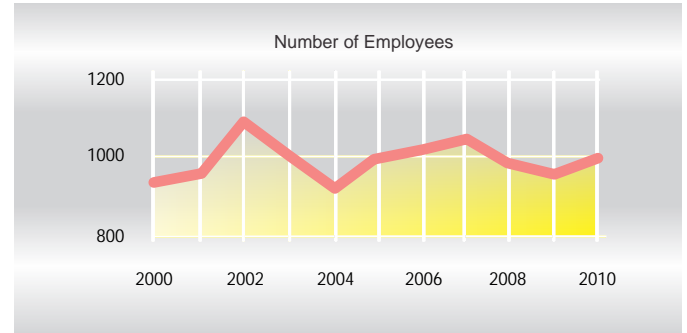


# VALUES

---

We are all creating a future together which is sustainable and viable in the long term. We are guided by our values, which are based on sustainable company development and social responsibility.

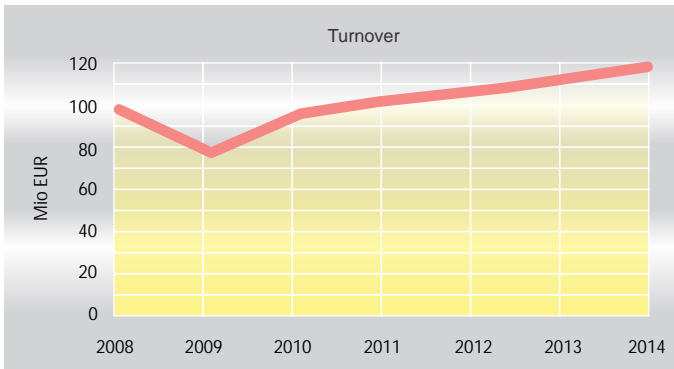
- Creativity and ambition
- Responsibility and economizing
- Respect and cooperation
- Customer and employee orientation
- Inclusion



# FUTURE VISION

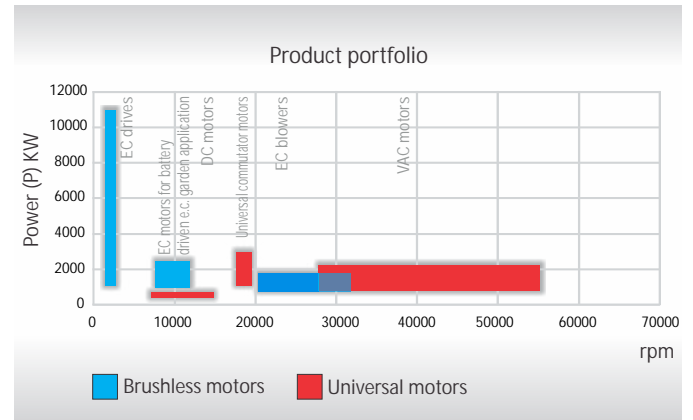
---

We want to become one of the leading developmental suppliers of EC motors and maintain our leading position on the vacuum cleaner motors market.



# OUR PRODUCTS

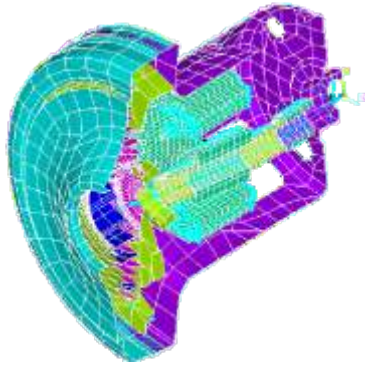
Domel is a global developmental supplier of electric vacuum motors for wet and dry applications, DC motors, electronically commutated motors for ventilation, pumping and air conditioning systems, garden applications and components made using our own custom tools and technologies. In developing our products we start with laboratory simulations, which are a precondition for the creation of construction designs that result in optimal functioning, high efficiency, long lifetime and environmental friendliness. The development of our motors is based on numerical methods and simulations of aerodynamics, electromagnetics, rotodynamics, durability and further optimization using our own development tools.



## OUR PRODUCTS

---

### ELECTRIC VACUUM MOTORS



Our electric vacuum motors, with which we have established a nearly 60 per cent market share among all suppliers of suction units in the European Community, are distinguished by their compact design, high energy efficiency, exceptional reliability and low vibration levels. In accordance with our customers' requirements, all of our motor designs are adapted to the final product with regard to capacity and shape, allowing the optimal functioning of the device. They are made for all voltage types and have skeleton housings made of metal or BMC material. They are manufactured on highly automated production lines which enable total traceability and 100% quality control in all phases of production. We have received numerous certificates from international standardization and quality organizations in accordance with EN, UL, CCC and IEC standards.



### UNIVERSAL MOTORS

It would be hard to imagine life without Domel motors in household appliances. Our DC and electronically commutated motors with classical windings form the driving core of small household appliances, coffee makers, stick mixers, battery-powered devices, sewing machines, vacuum cleaners and various automotive applications. To this end, all of our DC motors are made using the latest technical standards on highly automated production lines which ensure high quality, reliability, traceability and an excellent ratio between quality, energy efficiency and price. They are divided into several families according to voltage and size class, and depending on their specific requirements are equipped with various types of bearings, ballasts and brushes made of specially formulated graphite compounds designed to increase product lifetime. They are distinguished by their efficiency, specific power, high rpms and reliability. They are manufactured according to the RoHS and GdS international standards, which require the use of environmentally-friendly materials which are easily degradable at the end of the product lifetime.

# OUR PRODUCTS

---

Electronically commutated drives are the new global standard in the fields of energy efficiency, product lifetimes, capacity and process control. By using special technologies and solutions, Domel's new generation of electronically commutated drives operate without ionization sparking, with lower levels of electromagnetic interference and lower heat generation. EC drives combine all of this with exceptionally high power, precise control, low magnetic and electrical losses and long lifetimes. Domel's EC drives are found in the printing and transport industries, HVAC systems, various garden tools and drive systems for fuel cells.

## ELECTRONICALLY COMMUTATED DRIVES





# OUR PRODUCTS

---

## EC BLOWERS

Electronically commutated motors for centrifugal blowers play an important role in Domel's product range, with their compact design, high efficiency, exceptionally precise control, optimal flow, simple hook-up using a standard socket and DC or AC operation. Their most common applications include industrial machines, climate-control systems and various vacuum and pressure devices, as well as fuel cells. The EC blowers are equipped with one-, two- or three-level turbine systems, tangential or radial air intakes and various adaptations which are custom built to our customers' specifications.

## AUTOMOTIVE INDUSTRY

Domel has a very clear strategy in the field of applications for the automotive industry. A significant part of this strategy is played by sealed BLDC motors, stepper motors, DC PM motors and specialized motors and components. They are used in auxiliary drive systems for electric and hybrid vehicles, and in safety systems.



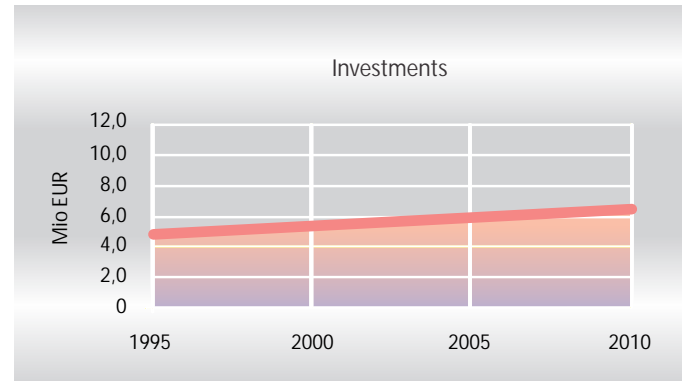
## COMPONENTS AND TOOLS

Our own innovative in-house technology with sets made of electrical sheet metal, plasticized metal cores and products made of BMC Duroplast are key parts of Domel's product range. Our tool shop develops, manufactures and markets tools and components for cutting electrical sheets, spraying plastic, plasticizing metal cores and injection moulding. Domel's tool shop has featured cutting-edge technologies ever since the company was founded!

# DEVELOPMENTAL SUPPLIER

---

We are a developmental supplier with a clear vision and in-house development, through which we create trends and purchasing habits, and technical solutions at all levels of development of individual products and devices. We have received numerous awards from independent and consumer organizations, and our laboratories are part of the international and national development network. We also enjoy long-standing cooperation with the world's leading manufacturers in numerous branches of industry. Our development is carried out in projects and is DSS controlled.

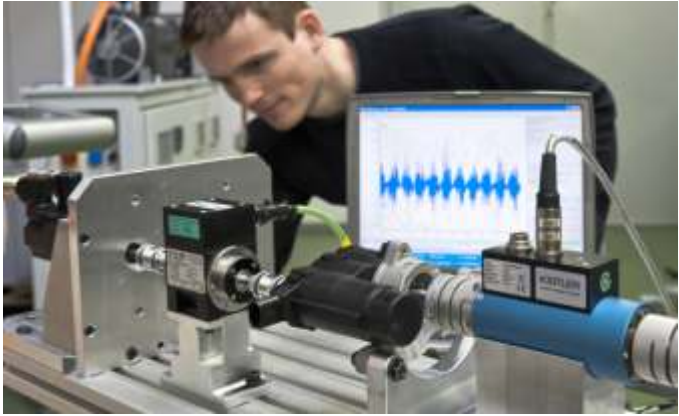


At Domel we want to remain one of the greenest European and global producers of motors, which creates trends and dictates the course of development. To this end we invest a substantial amount of funds into the development of new, innovative and ecologically sound products, which are distinguished by high efficiency, low energy consumption, quality, adaptability and long product lifetimes. We also develop components for alternative sources of energy such as electronically commutated motors for air supplies for fuel cells.

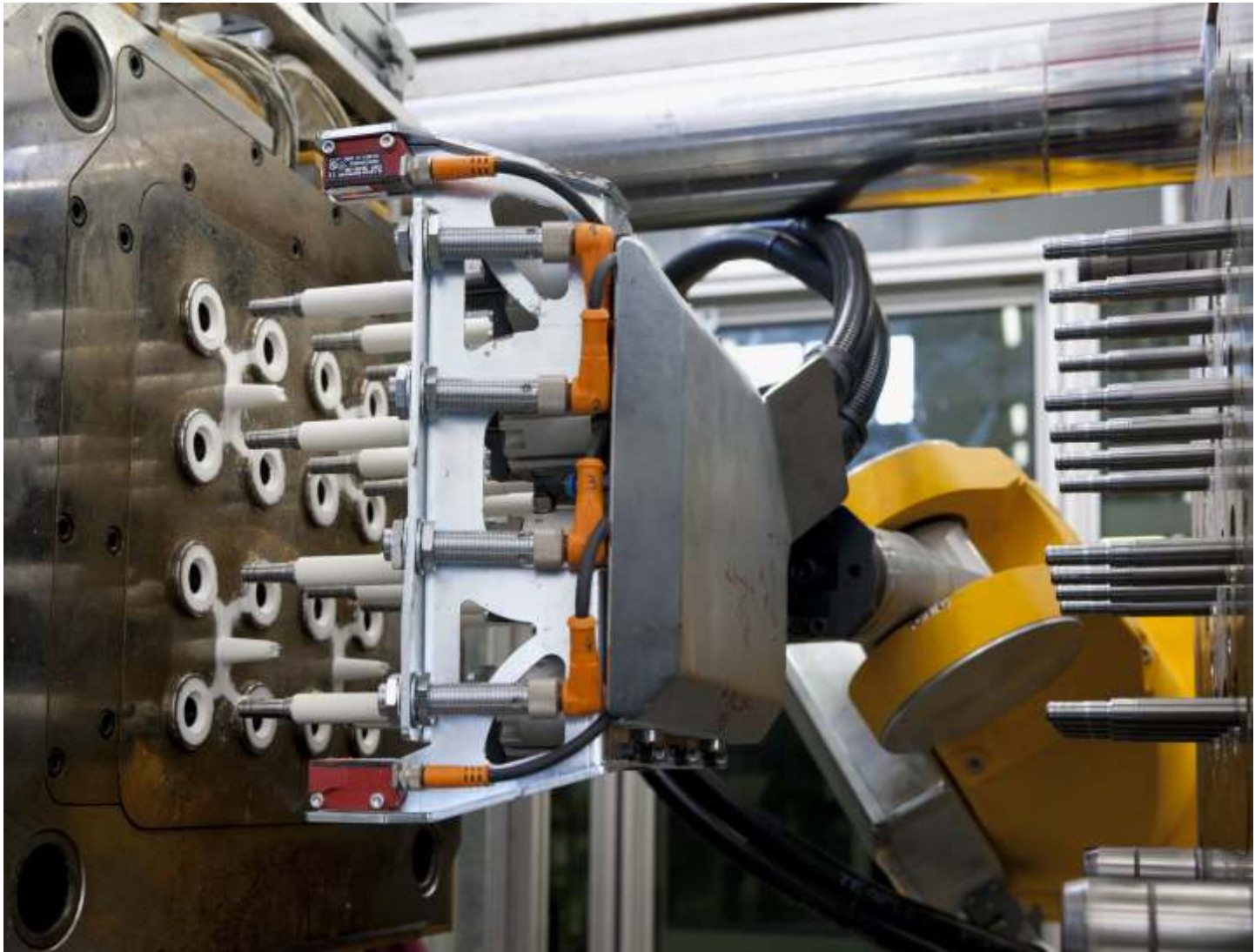
# PARTNERSHIP COMMITMENTS

---

Domel's business activities are based on a philosophy of long-term cooperation with established European and global business partners. We consolidate our supply chain through long-term business relationships with our suppliers, who we include already in the development phase.



Our roots go all the way back to the 15<sup>th</sup> and 16<sup>th</sup> centuries. The first forge for obtaining malleable iron was built in Železniki at that time. From it, our ancestors made nails and metal products that were hailed far and wide. Shipbuilders between Trieste and Venice used our nails to join the wooden and metal sheaths to the hulls of large trading and passenger ships, on which adventurers and people searching for a better life travelled far across the wide seas. Our ancestors' products are still supporting numerous buildings and bridges in cosmopolitan Venice and towns along the edge of the Venetian Lagoon. All of these are the roots of the Domel company, from which we grew into a leading manufacturer of electric vacuum motors with the largest market share in Europe, and from which we draw strength and our love for high technology and EC drives.



# GREEN COMMITMENTS

---

Domel would like to remain one of Europe's and the world's greenest manufacturers of electric motors. Our ecological focus starts with the environment we live in and reaches out around the world. Domel's products are therefore as green as the environment that surrounds our factory. This is our commitment to the present and future generations. All of our products are produced in accordance with the strictest European and global environmental industrial standards.



**DOMEL<sup>®</sup>**

---

*We create motion*

**DOMEL<sup>®</sup>**

Domel, d.o.o.  
Otoki 21, 4228 Železniki, Slovenia  
Tel.: +386 (0)4 51 17 100, Fax.: +386 (0)4 51 17 106  
[www.domel.si](http://www.domel.si)  
e-mail: [info@domel.com](mailto:info@domel.com)